

## Superoxide Dismutase 3 Rabbit mAb

Catalog No: #56236



Package Size: #56236-1 50ul #56236-2 100ul

Orders: order@signalwayantibody.com

Support: tech@signalwayantibody.com

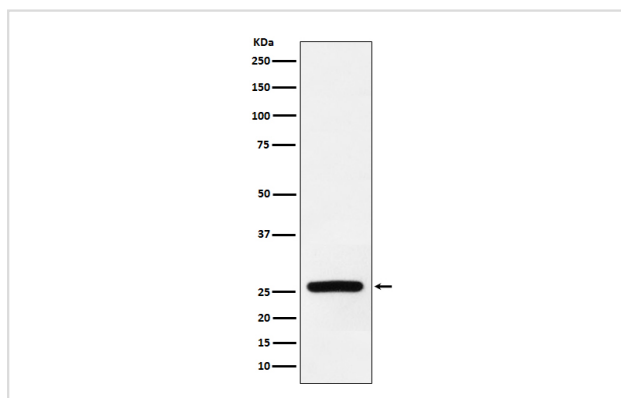
## Description

Product Name	Superoxide Dismutase 3 Rabbit mAb
Host Species	Rabbit
Clonality	Monoclonal
Isotype	Rabbit IgG
Purification	Affinity-chromatography
Applications	WB IHC
Species Reactivity	Human
Specificity	Superoxide Dismutase 3 Antibody detects endogenous levels of total Superoxide Dismutase 3
Immunogen Description	A synthesized peptide derived from human Superoxide Dismutase 3
Other Names	EC SOD; Extracellular superoxide dismutase [Cu Zn]; Extracellular superoxide dismutase precursor; SOD3; Superoxide dismutase 3 extracellular;
Accession No.	Uniprot:P08294
Calculated MW	26kDa
Formulation	Rabbit IgG in phosphate buffered saline , pH 7.4, 150mM NaCl, 0.02% sodium azide and 50% glycerol.
Storage	Store at +4°C short term. Store at -20°C long term. Avoid freeze / thaw cycle.

## Application Details

WB: 1:500~1:2000 IHC: 1:50~1:200

## Images



Western blot analysis of Superoxide Dismutase 3 expression in human fetal heart lysate.

## Product Description

Protect the extracellular space from toxic effect of reactive oxygen intermediates by converting superoxide radicals into hydrogen peroxide and oxygen.

---

Note: This product is for in vitro research use only and is not intended for use in humans or animals.