

## GABA B Receptor 1 Rabbit mAb

Catalog No: #56239

Package Size: #56239-1 50ul #56239-2 100ul

Orders: [order@signalwayantibody.com](mailto:order@signalwayantibody.com)Support: [tech@signalwayantibody.com](mailto:tech@signalwayantibody.com)

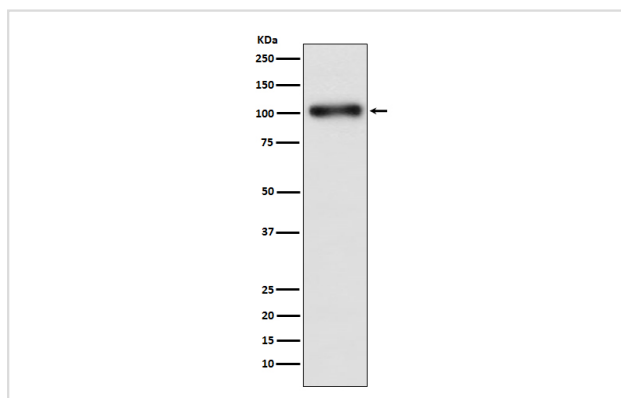
## Description

Product Name	GABA B Receptor 1 Rabbit mAb
Host Species	Rabbit
Clonality	Monoclonal
Isotype	Rabbit IgG
Purification	Affinity-chromatography
Applications	WB
Species Reactivity	Human Mouse Rat
Specificity	GABA B Receptor 1 Antibody detects endogenous levels of total GABA B Receptor 1
Immunogen Description	A synthesized peptide derived from human GABA B Receptor 1
Other Names	GABA-B receptor 1; GABA-B-R1; GABAB R1; GABAB subunit 1c; GABABR1; GABBR1 3; Gamma aminobutyric acid (GABA) B receptor 1; Gb1; GPRC3A;
Accession No.	Uniprot:Q9UBS5
Calculated MW	108kDa
Formulation	Rabbit IgG in phosphate buffered saline , pH 7.4, 150mM NaCl, 0.02% sodium azide and 50% glycerol.
Storage	Store at +4°C short term. Store at -20°C long term. Avoid freeze / thaw cycle.

## Application Details

WB: 1:500~1:2000

## Images



Western blot analysis of GABA B Receptor 1 expression in HeLa cell lysate.

## Product Description

Receptor for GABA. The activity of this receptor is mediated by G-proteins that inhibit adenylyl cyclase activity, stimulates phospholipase A2, activates potassium channels, inactivates voltage-dependent calcium-channels and modulates inositol phospholipids hydrolysis. Plays a critical role in the fine-tuning of inhibitory synaptic transmission.

---

Note: This product is for in vitro research use only and is not intended for use in humans or animals.