

## Slit2 Rabbit mAb

Catalog No: #56240

Package Size: #56240-1 50ul #56240-2 100ul

Orders: order@signalwayantibody.com

Support: tech@signalwayantibody.com

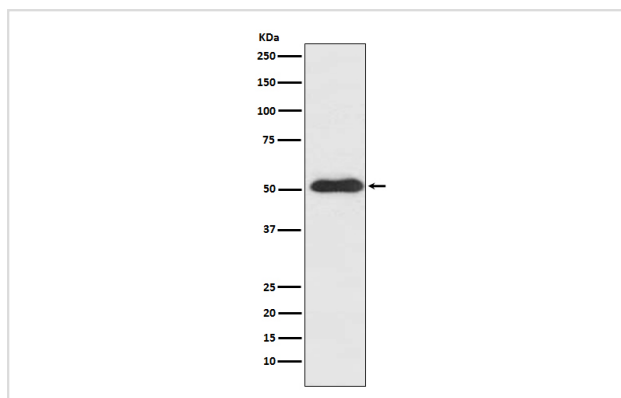
## Description

Product Name	Slit2 Rabbit mAb
Host Species	Rabbit
Clonality	Monoclonal
Isotype	Rabbit IgG
Purification	Affinity-chromatography
Applications	WB IHC IP
Species Reactivity	Human Mouse Rat
Specificity	Slit2 Antibody detects endogenous levels of total Slit2
Immunogen Description	A synthesized peptide derived from human Slit2
Other Names	Drad 1; Slit3; Slit homolog 2 (Drosophila); Slit homolog 2 protein C-product; Slit2 ;
Accession No.	Uniprot:O94813
Calculated MW	58kDa
Formulation	Rabbit IgG in phosphate buffered saline , pH 7.4, 150mM NaCl, 0.02% sodium azide and 50% glycerol.
Storage	Store at +4°C short term. Store at -20°C long term. Avoid freeze / thaw cycle.

## Application Details

WB:1:500~1:2000IHC:1:50~1:200IP:1:50

## Images



Western blot analysis of Slit2 expression in SH-SY5Y cell lysate.

## Product Description

Thought to act as molecular guidance cue in cellular migration, and function appears to be mediated by interaction with roundabout homolog receptors.

---

Note: This product is for in vitro research use only and is not intended for use in humans or animals.