

COUP TF1 Rabbit mAb

Catalog No: #56245

Package Size: #56245-1 50ul #56245-2 100ul

Orders: order@signalwayantibody.com

Support: tech@signalwayantibody.com

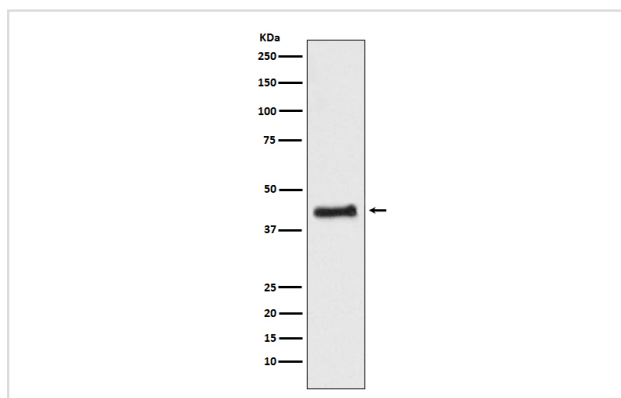
Description

Product Name	COUP TF1 Rabbit mAb
Host Species	Rabbit
Clonality	Monoclonal
Isotype	Rabbit IgG
Purification	Affinity-chromatography
Applications	WB IHC ICC/IF FC
Species Reactivity	Human Mouse Rat
Specificity	COUP TF1 Antibody detects endogenous levels of total COUP TF1
Immunogen Description	A synthesized peptide derived from human COUP TF1
Other Names	COUP-TF1; EAR3; ERBAL3; NR2F1; NR2F2; Nuclear receptor subfamily 2 group F member 1; SVP44; TCFCOUP1; TFCOUP1;
Accession No.	Uniprot:P10589
Calculated MW	46kDa
Formulation	Rabbit IgG in phosphate buffered saline , pH 7.4, 150mM NaCl, 0.02% sodium azide and 50% glycerol.
Storage	Store at +4°C short term. Store at -20°C long term. Avoid freeze / thaw cycle.

Application Details

WB:1:500~1:1000IHC:1:50~1:200ICC/IF:1:50~1:200FC:1:50

Images



Western blot analysis of COUP TF1 expression in HEK293 cell lysate.

Product Description

Coup (chicken ovalbumin upstream promoter) transcription factor binds to the ovalbumin promoter and, in conjunction with another protein (S300-II) stimulates initiation of transcription. Binds to both direct repeats and palindromes of the 5'-AGGTCA-3' motif. Represses transcriptional activity of LHCG.

Note: This product is for in vitro research use only and is not intended for use in humans or animals.