

## CD5 Rabbit mAb

Catalog No: #56254

Package Size: #56254-1 50ul #56254-2 100ul

Orders: order@signalwayantibody.com

Support: tech@signalwayantibody.com

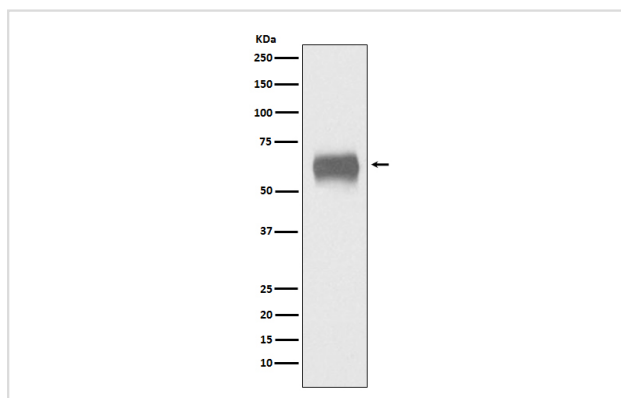
## Description

Product Name	CD5 Rabbit mAb
Host Species	Rabbit
Clonality	Monoclonal
Isotype	Rabbit IgG
Purification	Affinity-chromatography
Applications	WB IHC ICC IP
Species Reactivity	Human
Specificity	CD5 Antibody detects endogenous levels of total CD5
Immunogen Description	A synthesized peptide derived from human CD5
Other Names	CD5; CD5 antigen (p56 62); CD5 molecule; LEU1; LyA; Lymphocyte antigen T1/Leu-1; T-cell surface glycoprotein CD5; T1;
Accession No.	Uniprot:P06127
Calculated MW	55kDa
Formulation	Rabbit IgG in phosphate buffered saline , pH 7.4, 150mM NaCl, 0.02% sodium azide and 50% glycerol.
Storage	Store at +4°C short term. Store at -20°C long term. Avoid freeze / thaw cycle.

## Application Details

WB:1:1000~1:5000IHC:1:50~1:200ICC/IF:1:50~1:200IP:1:50

## Images



Western blot analysis of CD5 expression in human plasma lysate.

## Product Description

May act as a receptor in regulating T-cell proliferation. CD5 interacts with CD72/LYB-2.

---

Note: This product is for in vitro research use only and is not intended for use in humans or animals.