

REST / NRSF Rabbit mAb

Catalog No: #56260

Package Size: #56260-1 50ul #56260-2 100ul

Orders: order@signalwayantibody.com

Support: tech@signalwayantibody.com

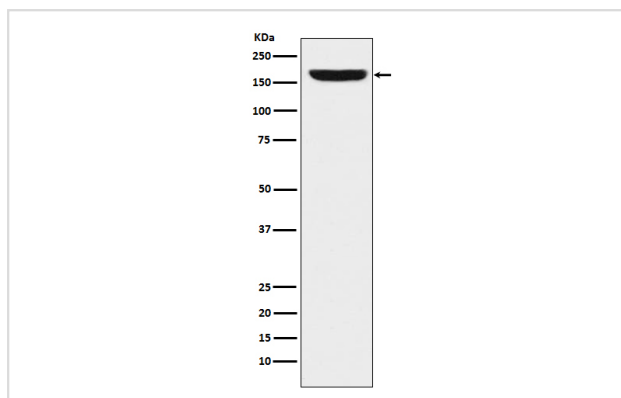
Description

Product Name	REST / NRSF Rabbit mAb
Host Species	Rabbit
Clonality	Monoclonal
Isotype	Rabbit IgG
Purification	Affinity-chromatography
Applications	WB
Species Reactivity	Human
Specificity	REST / NRSF Antibody detects endogenous levels of total REST / NRSF
Immunogen Description	A synthesized peptide derived from human REST / NRSF
Other Names	NRSF; RE1 silencing transcription factor; Repressor binding to the X2 box; rest; X2 box repressor; XBR;
Accession No.	Uniprot:Q13127
Calculated MW	160kDa
Formulation	Rabbit IgG in phosphate buffered saline , pH 7.4, 150mM NaCl, 0.02% sodium azide and 50% glycerol.
Storage	Store at +4°C short term. Store at -20°C long term. Avoid freeze / thaw cycle.

Application Details

WB:1:500~1:2000

Images



Western blot analysis of REST / NRSF expression in HeLa cell lysate.

Product Description

Transcriptional repressor which binds neuron-restrictive silencer element (NRSE) and represses neuronal gene transcription in non-neuronal cells. Restricts the expression of neuronal genes by associating with two distinct corepressors, mSin3 and CoREST, which in turn recruit histone deacetylase to the promoters of REST-regulated genes.

Note: This product is for in vitro research use only and is not intended for use in humans or animals.