

PKC eta Rabbit mAb

Catalog No: #56263

Package Size: #56263-1 50ul #56263-2 100ul

Orders: order@signalwayantibody.comSupport: tech@signalwayantibody.com

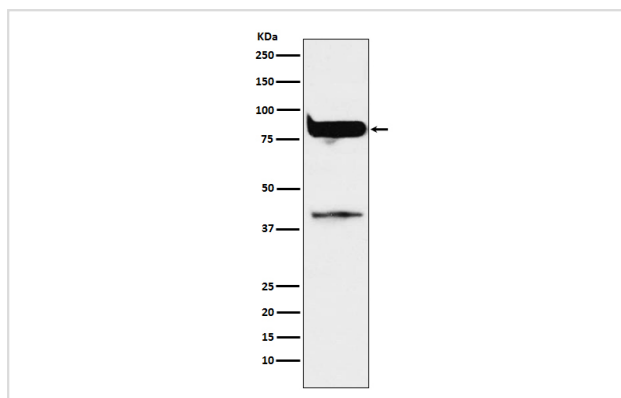
Description

Product Name	PKC eta Rabbit mAb
Host Species	Rabbit
Clonality	Monoclonal
Isotype	Rabbit IgG
Purification	Affinity-chromatography
Applications	WB IP
Species Reactivity	Human Mouse Rat
Specificity	PKC eta Antibody detects endogenous levels of total PKC eta
Immunogen Description	A synthesized peptide derived from human PKC eta
Other Names	nPKC eta; PKC h; PKC L; PKCh; PKCL; Prkch; PRKCL; Protein kinase C eta;
Accession No.	Uniprot:P24723
Calculated MW	40,78kDa
Formulation	Rabbit IgG in phosphate buffered saline , pH 7.4, 150mM NaCl, 0.02% sodium azide and 50% glycerol.
Storage	Store at +4°C short term. Store at -20°C long term. Avoid freeze / thaw cycle.

Application Details

WB:1:500~1:2000IP:1:50

Images



Western blot analysis of PKC eta expression in MCF7 cell lysate.

Product Description

PKC is activated by diacylglycerol which in turn phosphorylates a range of cellular proteins. PKC also serves as the receptor for phorbol esters, a class of tumor promoters.

Note: This product is for in vitro research use only and is not intended for use in humans or animals.