

UBE3A Rabbit mAb

Catalog No: #56266

Package Size: #56266-1 50ul #56266-2 100ul

Orders: order@signalwayantibody.com

Support: tech@signalwayantibody.com

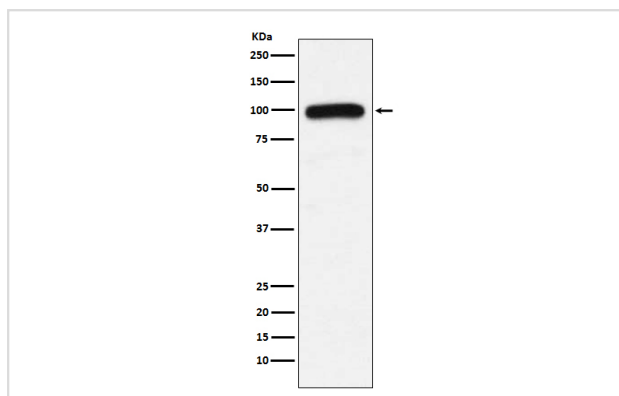
Description

Product Name	UBE3A Rabbit mAb
Host Species	Rabbit
Clonality	Monoclonal
Isotype	Rabbit IgG
Purification	Affinity-chromatography
Applications	WB
Species Reactivity	Human Mouse Rat
Specificity	UBE3A Antibody detects endogenous levels of total UBE3A
Immunogen Description	A synthesized peptide derived from human UBE3A
Other Names	Ubiquitin-protein ligase E3A; UBE3A; E6AP; EPVE6AP; HPVE6A;
Accession No.	Uniprot:Q05086
Calculated MW	100kDa
Formulation	Rabbit IgG in phosphate buffered saline , pH 7.4, 150mM NaCl, 0.02% sodium azide and 50% glycerol.
Storage	Store at +4°C short term. Store at -20°C long term. Avoid freeze / thaw cycle.

Application Details

WB:1:500~1:2000

Images



Western blot analysis of UBE3A expression in K562 cell lysate.

Product Description

E3 ubiquitin-protein ligase which accepts ubiquitin from an E2 ubiquitin-conjugating enzyme in the form of a thioester and transfers it to its substrates. Several substrates have been identified including the RAD23A and RAD23B, MCM7 (which is involved in DNA replication), annexin A1, the PML tumor suppressor, and the cell cycle regulator CDKN1B.

Note: This product is for in vitro research use only and is not intended for use in humans or animals.