

## Otx1/2 Rabbit mAb

Catalog No: #56267

Package Size: #56267-1 50ul #56267-2 100ul

Orders: order@signalwayantibody.com

Support: tech@signalwayantibody.com

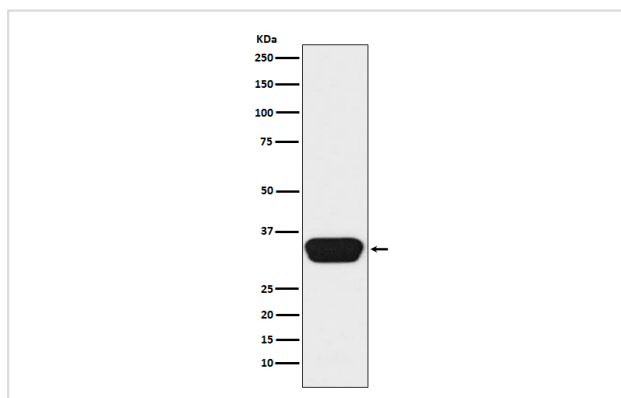
## Description

Product Name	Otx1/2 Rabbit mAb
Host Species	Rabbit
Clonality	Monoclonal
Isotype	Rabbit IgG
Purification	Affinity-chromatography
Applications	WB IHC CHIP
Species Reactivity	Human Mouse Rat
Specificity	Otx1/2 Antibody detects endogenous levels of total Otx1/2
Immunogen Description	A synthesized peptide derived from human Otx1/2
Other Names	Homeobox protein OTX1; Homeobox protein OTX2; Orthodenticle 1; Orthodenticle 2; Orthodenticle homeobox 1; Orthodenticle homeobox 2; Orthodenticle1; Orthodenticle2; otx1; otx2;
Accession No.	Uniprot:P32242,P32243
Calculated MW	32kDa
Formulation	Rabbit IgG in phosphate buffered saline , pH 7.4, 150mM NaCl, 0.02% sodium azide and 50% glycerol.
Storage	Store at +4°C short term. Store at -20°C long term. Avoid freeze / thaw cycle.

## Application Details

WB:1:500~1:2000IHC:1:100~1:500CHIP:

## Images



Western blot analysis of Otx1/2 expression in Y79 cell lysate.

## Product Description

Probably plays a role in the development of the brain and the sense organs. Can bind to the BCD target sequence (BTS): 5'-TCTAATCCC-3'.

---

Note: This product is for in vitro research use only and is not intended for use in humans or animals.