

## Langerin (CD207) Rabbit mAb

Catalog No: #56269

Package Size: #56269-1 50ul #56269-2 100ul

Orders: [order@signalwayantibody.com](mailto:order@signalwayantibody.com)Support: [tech@signalwayantibody.com](mailto:tech@signalwayantibody.com)

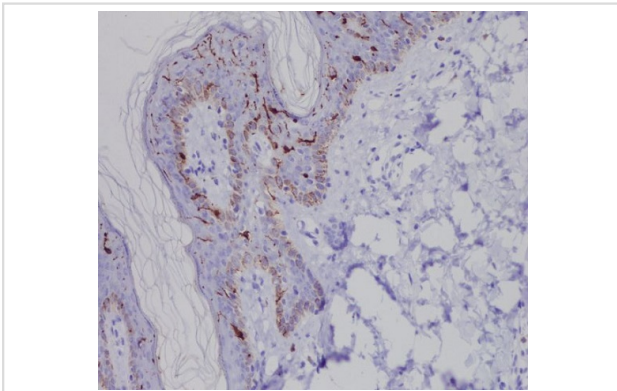
## Description

Product Name	Langerin (CD207) Rabbit mAb
Host Species	Rabbit
Clonality	Monoclonal
Isotype	Rabbit IgG
Purification	Affinity-chromatography
Applications	IHC
Species Reactivity	Human
Specificity	Langerin (CD207) Antibody detects endogenous levels of total Langerin (CD207)
Immunogen Description	A synthesized peptide derived from human Langerin (CD207)
Other Names	CD207; CD207 antigen; CD207 antigen, langerin; CD207 molecule; CLEC4K; Langerhans cell specific c type lectin; Langerin;
Accession No.	Uniprot:Q9UJ71
Calculated MW	kDa
Storage	Rabbit IgG in phosphate buffered saline , pH 7.4, 150mM NaCl, 0.02% sodium azide and 50% glycerol. Store at +4°C short term. Store at -20°C long term. Avoid freeze / thaw cycle.

## Application Details

IHC:1:50~1:200

## Images



Immunohistochemical analysis of paraffin-embedded human skin, using Langerin (CD207) Antibody.

## Product Description

Calcium-dependent lectin displaying mannose-binding specificity. Induces the formation of Birbeck granules (BGs); is a potent regulator of membrane superimposition and zippering.

---

Note: This product is for in vitro research use only and is not intended for use in humans or animals.