

EEF2 Rabbit mAb

Catalog No: #56272

Package Size: #56272-1 50ul #56272-2 100ul

Orders: order@signalwayantibody.com

Support: tech@signalwayantibody.com

Description

Product Name	EEF2 Rabbit mAb
Host Species	Rabbit
Clonality	Monoclonal
Isotype	Rabbit IgG
Purification	Affinity-chromatography
Applications	WB IHC ICC/IF IP FC
Species Reactivity	Human Mouse Rat
Specificity	EEF2 Antibody detects endogenous levels of total EEF2
Immunogen Description	A synthesized peptide derived from human EEF2
Other Names	EEF 2; Eef2; EF-2; EF2; Elongation factor 2; Polypeptidyl tRNA translocase; SCA26;
Accession No.	Uniprot:P13639
Calculated MW	95kDa
Formulation	Rabbit IgG in phosphate buffered saline , pH 7.4, 150mM NaCl, 0.02% sodium azide and 50% glycerol.
Storage	Store at +4°C short term. Store at -20°C long term. Avoid freeze / thaw cycle.

Application Details

WB:1:1000~1:5000

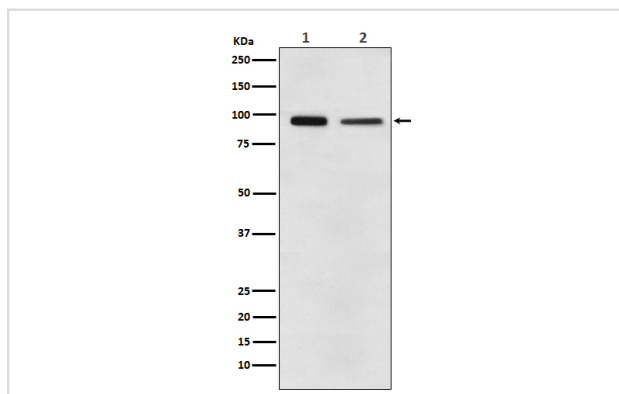
IHC:1:50~1:200

ICC/IF:1:50~1:200

IP:1:20

FC:1:50

Images



Western blot analysis of EEF2 expression in (1) A431 cell lysate; (2) NIH/3T3 cell lysate.

Product Description

Catalyzes the GTP-dependent ribosomal translocation step during translation elongation. During this step, the ribosome changes from the

pre-translocational (PRE) to the post-translocational (POST) state as the newly formed A-site-bound peptidyl-tRNA and P-site-bound deacylated tRNA move to the P and E sites, respectively.

Note: This product is for in vitro research use only and is not intended for use in humans or animals.