

TRPM8 Rabbit mAb

Catalog No: #56273

Package Size: #56273-1 50ul #56273-2 100ul

Orders: order@signalwayantibody.comSupport: tech@signalwayantibody.com

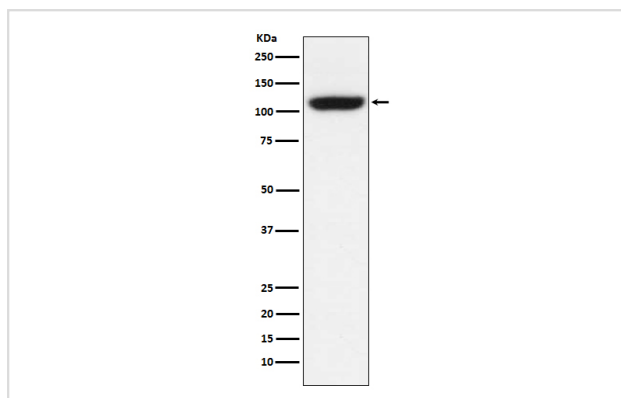
Description

Product Name	TRPM8 Rabbit mAb
Host Species	Rabbit
Clonality	Monoclonal
Isotype	Rabbit IgG
Purification	Affinity-chromatography
Applications	WB ICC
Species Reactivity	Human Mouse
Specificity	TRPM8 Antibody detects endogenous levels of total TRPM8
Immunogen Description	A synthesized peptide derived from human TRPM8
Other Names	LTrpC6; MGC2849; Transient receptor potential p8; Trp p8; Trpm8; TRPP8;
Accession No.	Uniprot:Q7Z2W7
Calculated MW	128kDa
Formulation	Rabbit IgG in phosphate buffered saline , pH 7.4, 150mM NaCl, 0.02% sodium azide and 50% glycerol.
Storage	Store at +4°C short term. Store at -20°C long term. Avoid freeze / thaw cycle.

Application Details

WB:1:500~1:2000 ICC/IF:1:50~1:200

Images



Western blot analysis of TRPM8 expression in A549 cell lysate.

Product Description

Activated by icilin, eucalyptol, menthol, cold and modulation of intracellular pH. Involved in menthol sensation. Permeable for monovalent cations sodium, potassium, and cesium and divalent cation calcium.

Note: This product is for in vitro research use only and is not intended for use in humans or animals.