

## TAX1BP3 Rabbit mAb

Catalog No: #56281

Package Size: #56281-1 50ul #56281-2 100ul

Orders: [order@signalwayantibody.com](mailto:order@signalwayantibody.com)Support: [tech@signalwayantibody.com](mailto:tech@signalwayantibody.com)

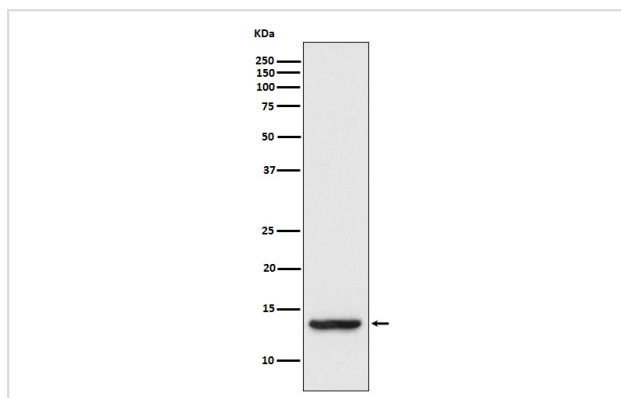
## Description

Product Name	TAX1BP3 Rabbit mAb
Host Species	Rabbit
Clonality	Monoclonal
Isotype	Rabbit IgG
Purification	Affinity-chromatography
Applications	WB IHC FC
Species Reactivity	Human Mouse Rat
Specificity	TAX1BP3 Antibody detects endogenous levels of total TAX1BP3
Immunogen Description	A synthesized peptide derived from human TAX1BP3
Other Names	Glutaminase interacting protein 3; Tax interaction protein 1; Tax1 binding protein 3; Tax1bp3; TIP1;
Accession No.	Uniprot:O14907
Calculated MW	14kDa
Formulation	Rabbit IgG in phosphate buffered saline , pH 7.4, 150mM NaCl, 0.02% sodium azide and 50% glycerol.
Storage	Store at +4°C short term. Store at -20°C long term. Avoid freeze / thaw cycle.

## Application Details

WB:1:500~1:2000IHC:1:50~1:200FC:1:70

## Images



Western blot analysis of TAX1BP3 expression in HT-1080 cell lysate.

## Product Description

May play a role in the Rho signaling pathway. May act as an inhibitor of the Wnt signaling pathway. May play a role in activation of CDC42 by the viral protein HPV16 E6.

---

Note: This product is for in vitro research use only and is not intended for use in humans or animals.