

Claudin 4 Rabbit mAb

Catalog No: #56285



Package Size: #56285-1 50ul #56285-2 100ul

Orders: order@signalwayantibody.comSupport: tech@signalwayantibody.com

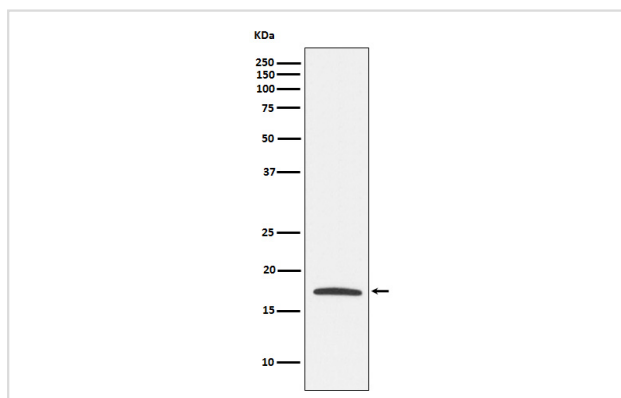
Description

Product Name	Claudin 4 Rabbit mAb
Host Species	Rabbit
Clonality	Monoclonal
Isotype	Rabbit IgG
Purification	Affinity-chromatography
Applications	WB IHC IP
Species Reactivity	Human
Specificity	Claudin 4 Antibody detects endogenous levels of total Claudin 4
Immunogen Description	A synthesized peptide derived from human Claudin 4
Other Names	CLD4; CLDN4; CPE- receptor; CPE-R; CPER; CPETR1; Clostridium perfringens enterotoxin receptor; WBSR8; Williams-Beuren syndrome chromosome 8 protein;
Accession No.	Uniprot:O14493
Calculated MW	18kDa
Formulation	Rabbit IgG in phosphate buffered saline , pH 7.4, 150mM NaCl, 0.02% sodium azide and 50% glycerol.
Storage	Store at +4°C short term. Store at -20°C long term. Avoid freeze / thaw cycle.

Application Details

WB:1:500~1:1000IHC:1:100~1:500IP:1:20

Images



Western blot analysis of Claudin 4 expression in MCF7 cell lysate.

Product Description

Plays a major role in tight junction-specific obliteration of the intercellular space.

Note: This product is for in vitro research use only and is not intended for use in humans or animals.