

POMC Rabbit mAb

Catalog No: #56287

Package Size: #56287-1 50ul #56287-2 100ul

Orders: order@signalwayantibody.com

Support: tech@signalwayantibody.com

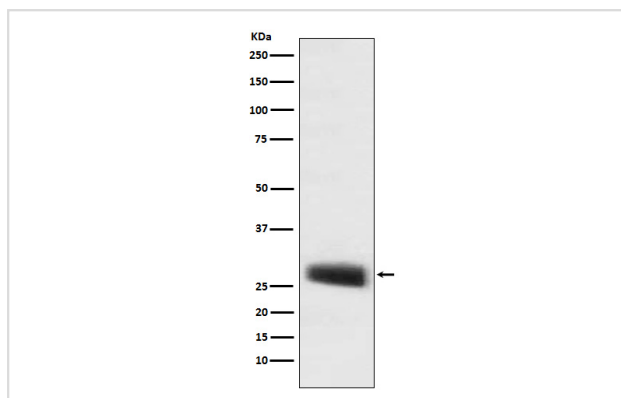
Description

| | |
|-----------------------|--|
| Product Name | POMC Rabbit mAb |
| Host Species | Rabbit |
| Clonality | Monoclonal |
| Isotype | Rabbit IgG |
| Purification | Affinity-chromatography |
| Applications | WB IHC IP |
| Species Reactivity | Human Mouse Rat |
| Specificity | POMC Antibody detects endogenous levels of total POMC |
| Immunogen Description | A synthesized peptide derived from human POMC |
| Other Names | LPH; MSH; NPP; POC; ACTH; CLIP; |
| Accession No. | Uniprot:P01189 |
| Calculated MW | 29kDa |
| Formulation | Rabbit IgG in phosphate buffered saline , pH 7.4, 150mM NaCl, 0.02% sodium azide and 50% glycerol. |
| Storage | Store at +4°C short term. Store at -20°C long term. Avoid freeze / thaw cycle. |

Application Details

WB:1:500~1:2000IHC:1:100~1:500IP:1:50

Images



Western blot analysis of POMC expression in mouse pituitary lysate.

Product Description

ACTH stimulates the adrenal glands to release cortisol. MSH (melanocyte-stimulating hormone) increases the pigmentation of skin by increasing melanin production in melanocytes. Beta-endorphin and Met-enkephalin are endogenous opiates.

Note: This product is for in vitro research use only and is not intended for use in humans or animals.