

SA2 Rabbit mAb

Catalog No: #56289



Package Size: #56289-1 50ul #56289-2 100ul

Orders: order@signalwayantibody.comSupport: tech@signalwayantibody.com

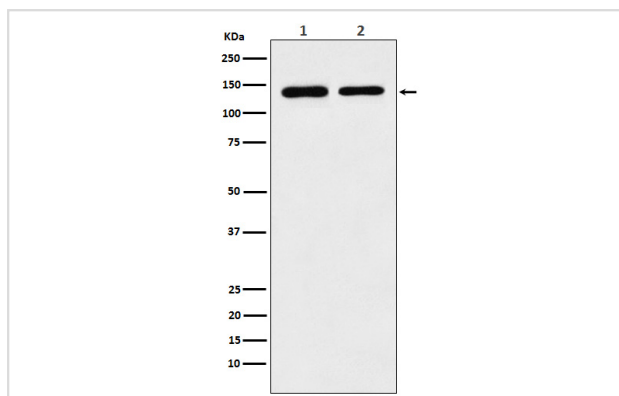
Description

Product Name	SA2 Rabbit mAb
Host Species	Rabbit
Clonality	Monoclonal
Isotype	Rabbit IgG
Purification	Affinity-chromatography
Applications	WB IHC ICC/IF FC
Species Reactivity	Human Mouse Rat
Specificity	SA2 Antibody detects endogenous levels of total SA2
Immunogen Description	A synthesized peptide derived from human SA2
Other Names	SA 2; SA-2; SA2; SCC3 homolog 2; SCC3B; stag2; Stromal antigen 2;
Accession No.	Uniprot:Q8N3U4
Calculated MW	141kDa
Formulation	Rabbit IgG in phosphate buffered saline , pH 7.4, 150mM NaCl, 0.02% sodium azide and 50% glycerol.
Storage	Store at +4°C short term. Store at -20°C long term. Avoid freeze / thaw cycle.

Application Details

WB:1:500~1:1000IHC:1:100~1:500ICC/IF:1:50~1:200FC:1:200

Images



Western blot analysis of SA2 expression in (1) K562 cell lysate; (2) Raw264.7 cell lysate.

Product Description

Component of cohesin complex, a complex required for the cohesion of sister chromatids after DNA replication. The cohesin complex apparently forms a large proteinaceous ring within which sister chromatids can be trapped. At anaphase, the complex is cleaved and dissociates from chromatin, allowing sister chromatids to segregate.

Note: This product is for in vitro research use only and is not intended for use in humans or animals.