

## PAK1 Rabbit mAb

Catalog No: #56291

Package Size: #56291-1 50ul #56291-2 100ul

Orders: [order@signalwayantibody.com](mailto:order@signalwayantibody.com)Support: [tech@signalwayantibody.com](mailto:tech@signalwayantibody.com)

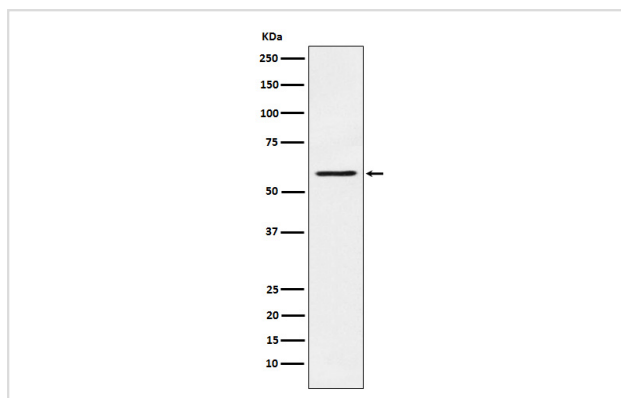
## Description

Product Name	PAK1 Rabbit mAb
Host Species	Rabbit
Clonality	Monoclonal
Isotype	Rabbit IgG
Purification	Affinity-chromatography
Applications	WB IHC ICC/IF IP FC
Species Reactivity	Human Mouse Rat
Specificity	PAK1 Antibody detects endogenous levels of total PAK1
Immunogen Description	A synthesized peptide derived from human PAK1
Other Names	ADRB2; p21 activated kinase 1; p65 PAK; PAK alpha; Pak1; Paka; PAKalpha; Protein kinase MUK2;
Accession No.	Uniprot:Q13153
Calculated MW	66kDa
Formulation	Rabbit IgG in phosphate buffered saline , pH 7.4, 150mM NaCl, 0.02% sodium azide and 50% glycerol.
Storage	Store at +4°C short term. Store at -20°C long term. Avoid freeze / thaw cycle.

## Application Details

WB:1:500~1:2000IHC:1:100~1:500ICC/IF:1:50~1:200IP:1:40FC:1:30

## Images



Western blot analysis of PAK1 expression in A431 cell lysate.

## Product Description

The activated kinase acts on a variety of targets. Likely to be the GTPase effector that links the Rho-related GTPases to the JNK MAP kinase pathway. Activated by CDC42 and RAC1. Involved in dissolution of stress fibers and reorganization of focal complexes. Involved in regulation of microtubule biogenesis through phosphorylation of TBCB.

---

Note: This product is for in vitro research use only and is not intended for use in humans or animals.