

## GRB2 Rabbit mAb

Catalog No: #56294

Package Size: #56294-1 50ul #56294-2 100ul

Orders: [order@signalwayantibody.com](mailto:order@signalwayantibody.com)Support: [tech@signalwayantibody.com](mailto:tech@signalwayantibody.com)

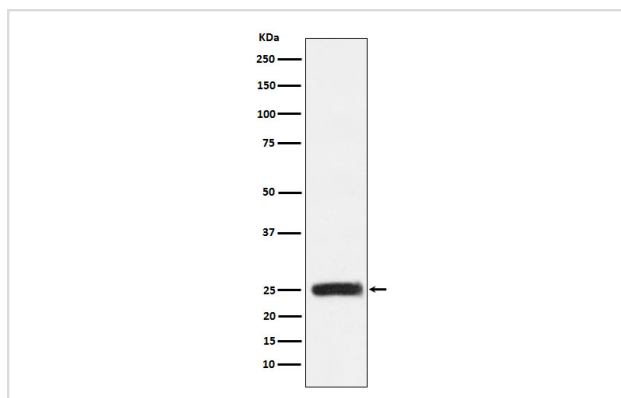
## Description

|                       |  |
|-----------------------|--|
| Product Name          | GRB2 Rabbit mAb  |
| Host Species          | Rabbit   |
| Clonality             | Monoclonal   |
| Isotype               | Rabbit IgG   |
| Purification          | Affinity-chromatography  |
| Applications          | WB IHC ICC/IF IP   |
| Species Reactivity    | Human Mouse Rat  |
| Specificity           | GRB2 Antibody detects endogenous levels of total GRB2  |
| Immunogen Description | A synthesized peptide derived from human GRB2  |
| Other Names           | ASH; Grb2; Grb3 3; HT027; NCKAP2; Protein ash; SEM5;   |
| Accession No.         | Uniprot:P62993   |
| Calculated MW         | 25kDa  |
| Formulation           | Rabbit IgG in phosphate buffered saline , pH 7.4, 150mM NaCl, 0.02% sodium azide and 50% glycerol. |
| Storage               | Store at +4°C short term. Store at -20°C long term. Avoid freeze / thaw cycle.                     |

## Application Details

WB:1:500~1:2000IHC:1:50~1:200ICC/IF:1:50~1:200IP:1:50

## Images



Western blot analysis of GRB2 expression in HEK293 cell lysate.

## Product Description

Adapter protein that provides a critical link between cell surface growth factor receptors and the Ras signaling pathway.

---

Note: This product is for in vitro research use only and is not intended for use in humans or animals.