

## CD33 Rabbit mAb

Catalog No: #56297

Package Size: #56297-1 50ul #56297-2 100ul

Orders: [order@signalwayantibody.com](mailto:order@signalwayantibody.com)Support: [tech@signalwayantibody.com](mailto:tech@signalwayantibody.com)

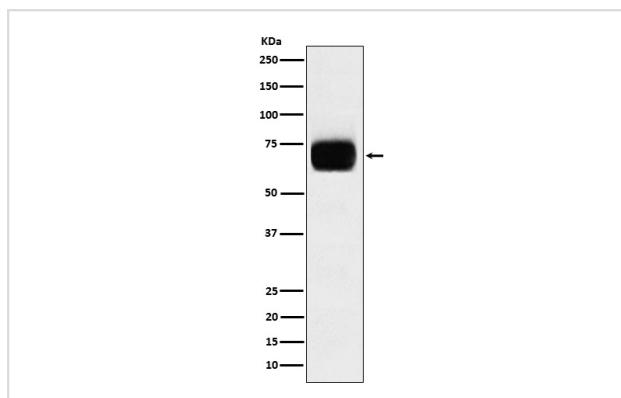
## Description

Product Name	CD33 Rabbit mAb
Host Species	Rabbit
Clonality	Monoclonal
Isotype	Rabbit IgG
Purification	Affinity-chromatography
Applications	WB IP
Species Reactivity	Human
Specificity	CD33 Antibody detects endogenous levels of total CD33
Immunogen Description	A synthesized peptide derived from human CD33
Other Names	CD33; gp67; My9; p67; SIGLEC3;
Accession No.	Uniprot:P20138
Calculated MW	65-75kDa
Formulation	Rabbit IgG in phosphate buffered saline , pH 7.4, 150mM NaCl, 0.02% sodium azide and 50% glycerol.
Storage	Store at +4°C short term. Store at -20°C long term. Avoid freeze / thaw cycle.

## Application Details

WB:1:500~1:2000IP:1:50

## Images



Western blot analysis of CD33 expression in THP1 cell lysate.

## Product Description

Putative adhesion molecule of myelomonocytic-derived cells that mediates sialic-acid dependent binding to cells. Preferentially binds to alpha-2,6-linked sialic acid.

---

Note: This product is for in vitro research use only and is not intended for use in humans or animals.