

Egr1 Rabbit mAb

Catalog No: #56298

Package Size: #56298-1 50ul #56298-2 100ul

Orders: order@signalwayantibody.com

Support: tech@signalwayantibody.com

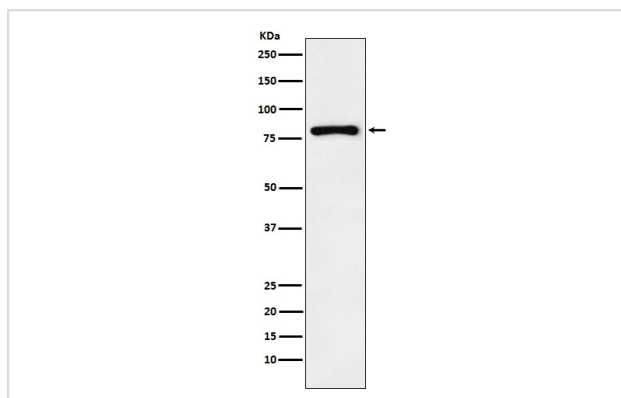
Description

Product Name	Egr1 Rabbit mAb
Host Species	Rabbit
Clonality	Monoclonal
Isotype	Rabbit IgG
Purification	Affinity-chromatography
Applications	WB IHC ICC/IF
Species Reactivity	Human
Specificity	Egr1 Antibody detects endogenous levels of total Egr1
Immunogen Description	A synthesized peptide derived from human Egr1
Other Names	TIS8; AT225; G0S30; NGFI-A; ZNF225; KROX-24; ZIF-268; EGR1;
Accession No.	Uniprot:P18146
Calculated MW	80kDa
Formulation	Rabbit IgG in phosphate buffered saline , pH 7.4, 150mM NaCl, 0.02% sodium azide and 50% glycerol.
Storage	Store at +4°C short term. Store at -20°C long term. Avoid freeze / thaw cycle.

Application Details

WB:1:10000~1:50000IHC:1:50~1:200ICC/IF:1:50~1:200

Images



Western blot analysis of Egr1 expression in 293T cell lysate treated with 20% FBS.

Product Description

Transcriptional regulator. Recognizes and binds to the DNA sequence 5'-CGCCCCCGC-3'(EGR-site). Activates the transcription of target genes whose products are required for mitogenesis and differentiation.

Note: This product is for in vitro research use only and is not intended for use in humans or animals.