

CD23 Rabbit mAb

Catalog No: #56300

Package Size: #56300-1 50ul #56300-2 100ul

Orders: order@signalwayantibody.com

Support: tech@signalwayantibody.com

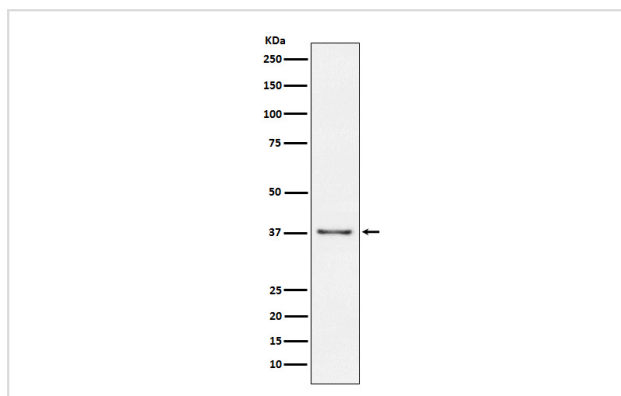
Description

| | |
|-----------------------|--|
| Product Name | CD23 Rabbit mAb |
| Host Species | Rabbit |
| Clonality | Monoclonal |
| Isotype | Rabbit IgG |
| Purification | Affinity-chromatography |
| Applications | WB IHC FC |
| Species Reactivity | Human |
| Specificity | CD23 Antibody detects endogenous levels of total CD23 |
| Immunogen Description | A synthesized peptide derived from human CD23 |
| Other Names | CD23; FCE2; CD23A; IGEBF; CLEC4J; FCER2; |
| Accession No. | Uniprot:P06734 |
| Calculated MW | 36kDa |
| Formulation | Rabbit IgG in phosphate buffered saline , pH 7.4, 150mM NaCl, 0.02% sodium azide and 50% glycerol. |
| Storage | Store at +4°C short term. Store at -20°C long term. Avoid freeze / thaw cycle. |

Application Details

WB:1:500~1:1000IHC:1:50~1:200FC:1:30

Images



Western blot analysis of CD23 expression in Raji cell lysate.

Product Description

This receptor has essential roles in the regulation of IgE production and in the differentiation of B-cells (it is a B-cell-specific antigen).

Note: This product is for in vitro research use only and is not intended for use in humans or animals.