

CD7 Rabbit mAb

Catalog No: #56303

Package Size: #56303-1 50ul #56303-2 100ul

Orders: order@signalwayantibody.comSupport: tech@signalwayantibody.com

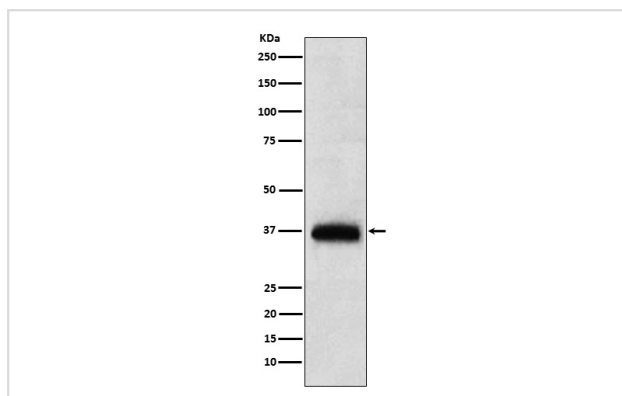
Description

Product Name	CD7 Rabbit mAb
Host Species	Rabbit
Clonality	Monoclonal
Isotype	Rabbit IgG
Purification	Affinity-chromatography
Applications	WB IHC ICC/IF IP
Species Reactivity	Human
Specificity	CD7 Antibody detects endogenous levels of total CD7
Immunogen Description	A synthesized peptide derived from human CD7
Other Names	CD7; GP40; LEU9; Tp40; TP41;
Accession No.	Uniprot:P09564
Calculated MW	37kDa
Formulation	Rabbit IgG in phosphate buffered saline , pH 7.4, 150mM NaCl, 0.02% sodium azide and 50% glycerol.
Storage	Store at +4°C short term. Store at -20°C long term. Avoid freeze / thaw cycle.

Application Details

WB:1:500~1:2000IHC:1:50~1:200ICC/IF:1:50~1:200IP:1:50

Images



Western blot analysis of CD7 expression in human PBMC lysate.

Product Description

Not yet known.

Note: This product is for in vitro research use only and is not intended for use in humans or animals.