

## MBD2 Rabbit mAb

Catalog No: #56304

Package Size: #56304-1 50ul #56304-2 100ul

Orders: [order@signalwayantibody.com](mailto:order@signalwayantibody.com)Support: [tech@signalwayantibody.com](mailto:tech@signalwayantibody.com)

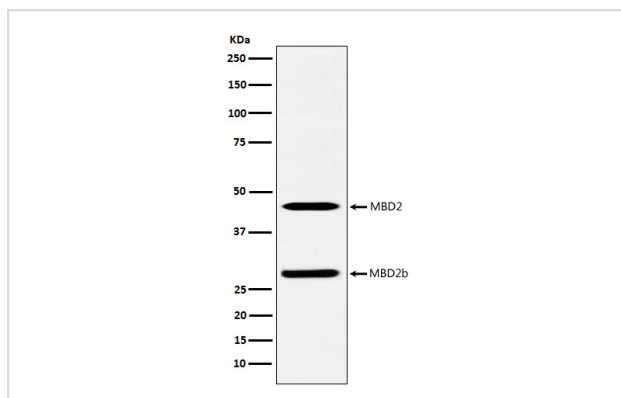
## Description

Product Name	MBD2 Rabbit mAb
Host Species	Rabbit
Clonality	Monoclonal
Isotype	Rabbit IgG
Purification	Affinity-chromatography
Applications	WB IHC ICC/IF IP FC
Species Reactivity	Human Mouse Rat
Specificity	MBD2 Antibody detects endogenous levels of total MBD2
Immunogen Description	A synthesized peptide derived from human MBD2
Other Names	Demethylase; DMTase; Mbd2; MBD2a;
Accession No.	Uniprot:Q9UBB5
Calculated MW	29,43kDa
Formulation	Rabbit IgG in phosphate buffered saline , pH 7.4, 150mM NaCl, 0.02% sodium azide and 50% glycerol.
Storage	Store at +4°C short term. Store at -20°C long term. Avoid freeze / thaw cycle.

## Application Details

WB:1:5000~1:10000IHC:1:50~1:200ICC/IF:1:50~1:200IP:1:50FC:1:50

## Images



Western blot analysis of MBD2 expression in A375 cell lysate.

## Product Description

Binds CpG islands in promoters where the DNA is methylated at position 5 of cytosine within CpG dinucleotides. Binds hemimethylated DNA as well. Recruits histone deacetylases and DNA methyltransferases.

---

Note: This product is for in vitro research use only and is not intended for use in humans or animals.