

BAG2 Rabbit mAb

Catalog No: #56306

Package Size: #56306-1 50ul #56306-2 100ul

Orders: order@signalwayantibody.comSupport: tech@signalwayantibody.com

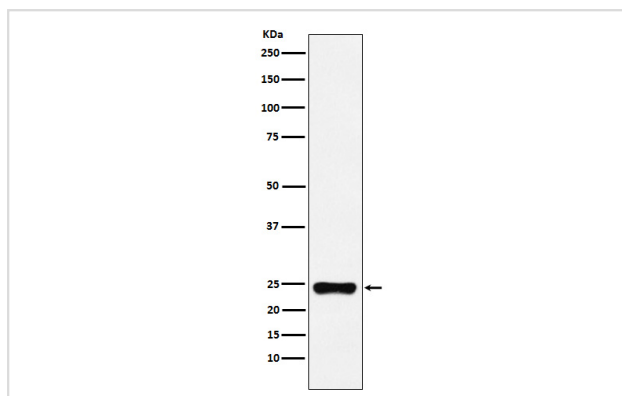
Description

Product Name	BAG2 Rabbit mAb
Host Species	Rabbit
Clonality	Monoclonal
Isotype	Rabbit IgG
Purification	Affinity-chromatography
Applications	WB ICC/IF
Species Reactivity	Human Mouse Rat
Specificity	BAG2 Antibody detects endogenous levels of total BAG2
Immunogen Description	A synthesized peptide derived from human BAG2
Other Names	BAG 2; Bag2;
Accession No.	Uniprot:O95816
Calculated MW	24kDa
Formulation	Rabbit IgG in phosphate buffered saline , pH 7.4, 150mM NaCl, 0.02% sodium azide and 50% glycerol.
Storage	Store at +4°C short term. Store at -20°C long term. Avoid freeze / thaw cycle.

Application Details

WB:1:500~1:2000 ICC/IF:1:50~1:200

Images



Western blot analysis of BAG2 expression in HeLa cell lysate.

Product Description

Inhibits the chaperone activity of HSP70/HSC70 by promoting substrate release.

Note: This product is for in vitro research use only and is not intended for use in humans or animals.