

## Inhibin alpha Rabbit mAb

Catalog No: #56307

Package Size: #56307-1 50ul #56307-2 100ul

Orders: [order@signalwayantibody.com](mailto:order@signalwayantibody.com)Support: [tech@signalwayantibody.com](mailto:tech@signalwayantibody.com)

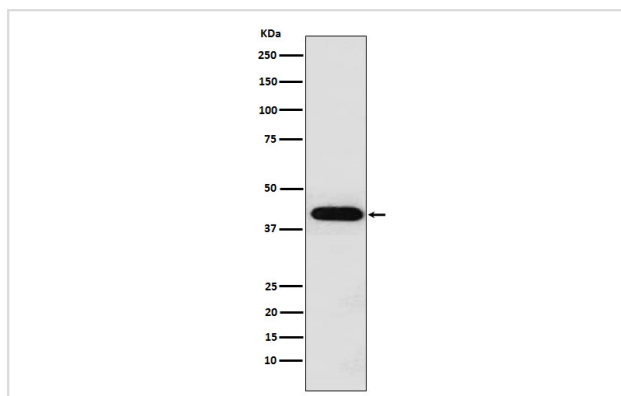
## Description

Product Name	Inhibin alpha Rabbit mAb
Host Species	Rabbit
Clonality	Monoclonal
Isotype	Rabbit IgG
Purification	Affinity-chromatography
Applications	WB FC
Species Reactivity	Human Mouse Rat
Specificity	Inhibin alpha Antibody detects endogenous levels of total Inhibin alpha
Immunogen Description	A synthesized peptide derived from human Inhibin alpha
Other Names	IHA; inhA; Inhibin alpha chain;
Accession No.	Uniprot:P05111
Calculated MW	40kDa
Formulation	Rabbit IgG in phosphate buffered saline , pH 7.4, 150mM NaCl, 0.02% sodium azide and 50% glycerol.
Storage	Store at +4°C short term. Store at -20°C long term. Avoid freeze / thaw cycle.

## Application Details

WB:1:500~1:2000FC:1:100

## Images



Western blot analysis of Inhibin alpha expression in HeLa cell lysate.

## Product Description

Inhibins and activins inhibit and activate, respectively, the secretion of follitropin by the pituitary gland. Inhibins/activins are involved in regulating a number of diverse functions such as hypothalamic and pituitary hormone secretion, gonadal hormone secretion, germ cell development and maturation, erythroid differentiation, insulin secretion, nerve cell survival, embryonic axial development or bone growth, depending on their subunit composition.

---

Note: This product is for in vitro research use only and is not intended for use in humans or animals.