

## Iba1 Rabbit mAb

Catalog No: #56308

Package Size: #56308-1 50ul #56308-2 100ul

Orders: [order@signalwayantibody.com](mailto:order@signalwayantibody.com)Support: [tech@signalwayantibody.com](mailto:tech@signalwayantibody.com)

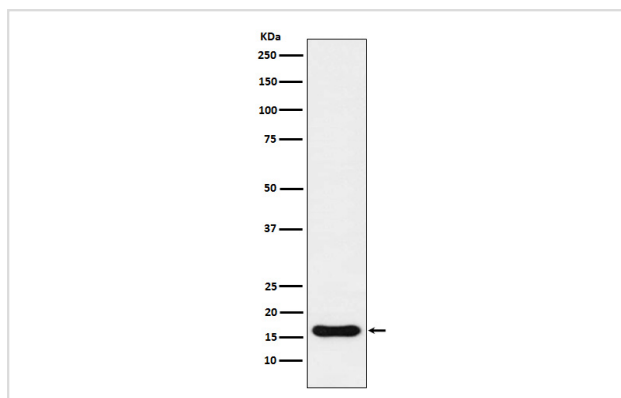
## Description

Product Name	Iba1 Rabbit mAb
Host Species	Rabbit
Clonality	Monoclonal
Isotype	Rabbit IgG
Purification	Affinity-chromatography
Applications	WB IHC ICC/IF IP
Species Reactivity	Human Mouse Rat
Specificity	Iba1 Antibody detects endogenous levels of total Iba1
Immunogen Description	A synthesized peptide derived from human Iba1
Other Names	IBA1; IRT1; AIF-1; IRT-1;
Accession No.	Uniprot:P55008
Calculated MW	17kDa
Formulation	Rabbit IgG in phosphate buffered saline , pH 7.4, 150mM NaCl, 0.02% sodium azide and 50% glycerol.
Storage	Store at +4°C short term. Store at -20°C long term. Avoid freeze / thaw cycle.

## Application Details

WB:1:500~1:1000IHC:1:100~1:500ICC/IF:1:50~1:200IP:1:50

## Images



Western blot analysis of Iba1 expression in U937 cell lysate.

## Product Description

Actin-binding protein that enhances membrane ruffling and RAC activation. Enhances the actin-bundling activity of LCP1. Binds calcium. Plays a role in RAC signaling and in phagocytosis.

---

Note: This product is for in vitro research use only and is not intended for use in humans or animals.