

## HA-tag Rabbit mAb

Catalog No: #56311



Package Size: #56311-1 50ul #56311-2 100ul

Orders: order@signalwayantibody.com

Support: tech@signalwayantibody.com

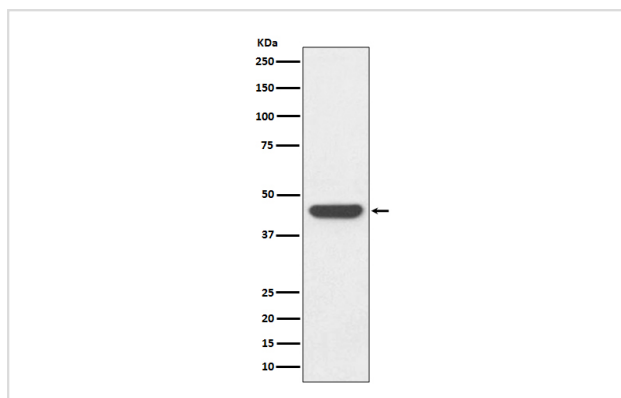
## Description

Product Name	HA-tag Rabbit mAb
Host Species	Rabbit
Clonality	Monoclonal
Isotype	Rabbit IgG
Purification	Affinity-chromatography
Applications	WB
Species Reactivity	All
Specificity	HA-tag Antibody detects endogenous levels of C-terminal, internal, and N-terminal HA-tagged proteins.
Immunogen Description	A synthesized peptide
Other Names	N/A
Accession No.	Uniprot:N/A
Calculated MW	N/A
Formulation	Rabbit IgG in phosphate buffered saline , pH 7.4, 150mM NaCl, 0.02% sodium azide and 50% glycerol.
Storage	Store at +4°C short term. Store at -20°C long term. Avoid freeze / thaw cycle.

## Application Details

WB:1:3000~1:10000

## Images



Western blot analysis of HA-tag fusion protein, using HA tag Antibody

## Product Description

HA-Tag antibody is part of the Tag series of antibodies, the best quality in the research.

---

Note: This product is for in vitro research use only and is not intended for use in humans or animals.