

## beta I Tubulin Rabbit mAb

Catalog No: #56312

Package Size: #56312-1 50ul #56312-2 100ul

Orders: order@signalwayantibody.com

Support: tech@signalwayantibody.com

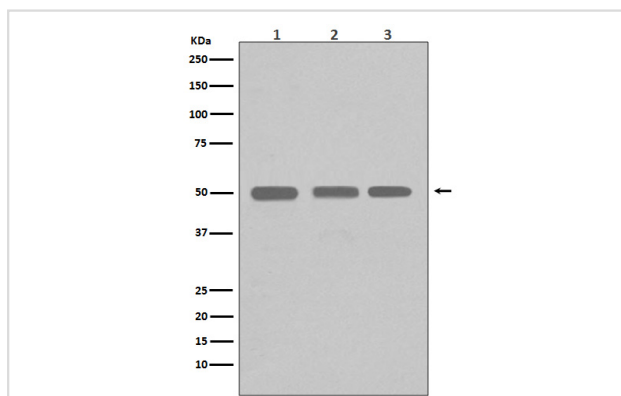
## Description

Product Name	beta I Tubulin Rabbit mAb
Host Species	Rabbit
Clonality	Monoclonal
Isotype	Rabbit IgG
Purification	Affinity-chromatography
Applications	WB IHC ICC/IF FC
Species Reactivity	Human Mouse Rat Cow Dog Monkey
Specificity	beta I Tubulin Antibody detects endogenous levels of total beta I Tubulin
Immunogen Description	A synthesized peptide derived from human beta I Tubulin
Other Names	Beta tubulin 1, class VI;Class VI beta tubulin antibody;TBB1_HUMAN;TUBB1;Tubulin beta 1 class VI;Tubulin, beta 1 antibody
Accession No.	Uniprot:Q9H4B7
Calculated MW	50kDa
Formulation	Rabbit IgG in phosphate buffered saline , pH 7.4, 150mM NaCl, 0.02% sodium azide and 50% glycerol.
Storage	Store at +4°C short term. Store at -20°C long term. Avoid freeze / thaw cycle.

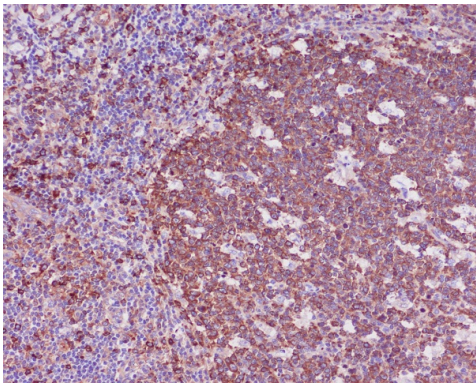
## Application Details

WB:1:3000~1:10000IHC:1:100~1:200ICC/IF:1:100~1:200FC:1:100

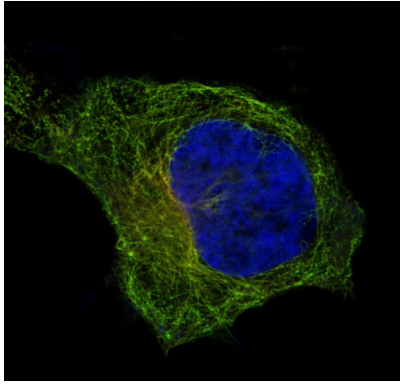
## Images



Western blot analysis of beta I Tubulin expression in (1) K562 cell lysate; (2) Jurkat cell lysate; (3) HeLa cell lysate; (4) 293T cell lysate using beta I Tubulin antibody.



Immunohistochemical analysis of paraffin-embedded human tonsil, using beta I Tubulin Antibody.



Immunofluorescent analysis of HeLa cells, using beta I Tubulin Antibody .

## Product Description

Tubulin is the major constituent of microtubules. It binds two moles of GTP, one at an exchangeable site on the beta chain and one at a non-exchangeable site on the alpha chain (By similarity).

Note: This product is for in vitro research use only and is not intended for use in humans or animals.