

## Heparanase 1 Rabbit mAb

Catalog No: #56324

Package Size: #56324-1 50ul #56324-2 100ul

Orders: [order@signalwayantibody.com](mailto:order@signalwayantibody.com)Support: [tech@signalwayantibody.com](mailto:tech@signalwayantibody.com)

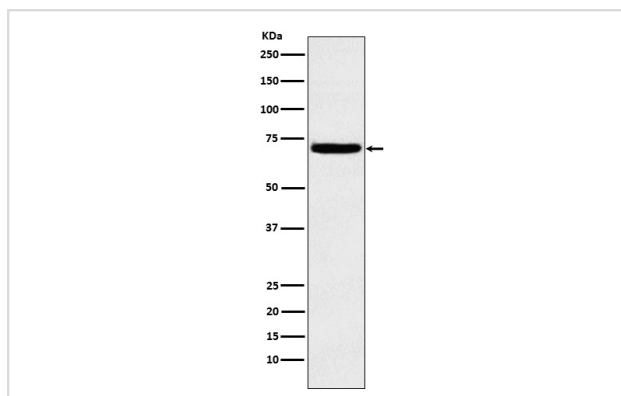
## Description

Product Name	Heparanase 1 Rabbit mAb
Host Species	Rabbit
Clonality	Monoclonal
Isotype	Rabbit IgG
Purification	Affinity-chromatography
Applications	WB IP
Species Reactivity	Human Mouse Rat
Specificity	Heparanase 1 Antibody detects endogenous levels of total Heparanase 1
Immunogen Description	A synthesized peptide derived from human Heparanase 1
Other Names	HEP; Heparanase; Heparanase1; Hpa 1; HPA; Hpa1 HPR1; HPSE1; HSE1;
Accession No.	Uniprot:Q9Y251
Calculated MW	70kDa
Formulation	Rabbit IgG in phosphate buffered saline , pH 7.4, 150mM NaCl, 0.02% sodium azide and 50% glycerol.
Storage	Store at +4°C short term. Store at -20°C long term. Avoid freeze / thaw cycle.

## Application Details

WB:1:500~1:2000IP:1:50

## Images



Western blot analysis of Heparanase 1 expression in K562 cell lysate.

## Product Description

Endoglycosidase which is a cell surface and extracellular matrix-degrading enzyme. Cleaves heparan sulfate proteoglycans (HSPGs) into heparan sulfate side chains and core proteoglycans.

---

Note: This product is for in vitro research use only and is not intended for use in humans or animals.