

## PEDF Rabbit mAb

Catalog No: #56332

Package Size: #56332-1 50ul #56332-2 100ul

Orders: [order@signalwayantibody.com](mailto:order@signalwayantibody.com)Support: [tech@signalwayantibody.com](mailto:tech@signalwayantibody.com)

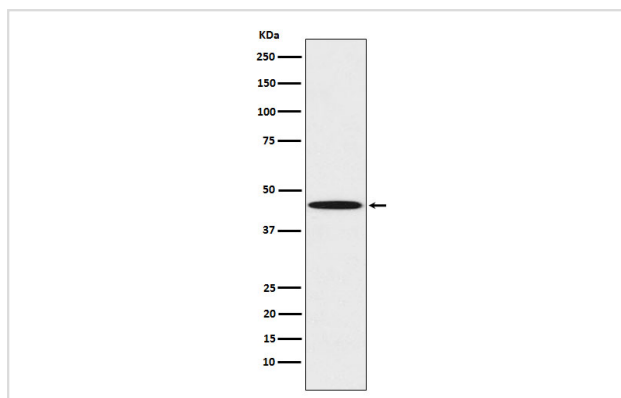
## Description

Product Name	PEDF Rabbit mAb
Host Species	Rabbit
Clonality	Monoclonal
Isotype	Rabbit IgG
Purification	Affinity-chromatography
Applications	WB FC
Species Reactivity	Human
Specificity	PEDF Antibody detects endogenous levels of total PEDF
Immunogen Description	A synthesized peptide derived from human PEDF
Other Names	EPC1; OI12; OI6; PEDF; PIG35; Serpinf1;
Accession No.	Uniprot:P36955
Calculated MW	46kDa
Formulation	Rabbit IgG in phosphate buffered saline , pH 7.4, 150mM NaCl, 0.02% sodium azide and 50% glycerol.
Storage	Store at +4°C short term. Store at -20°C long term. Avoid freeze / thaw cycle.

## Application Details

WB:1:500~1:2000FC:1:100

## Images



Western blot analysis of PEDF expression in K562 cell lysate.

## Product Description

Neurotrophic protein; induces extensive neuronal differentiation in retinoblastoma cells. Potent inhibitor of angiogenesis. As it does not undergo the S (stressed) to R (relaxed) conformational transition characteristic of active serpins, it exhibits no serine protease inhibitory activity.

---

Note: This product is for in vitro research use only and is not intended for use in humans or animals.