

## VGLUT1 Rabbit mAb

Catalog No: #56337

Package Size: #56337-1 50ul #56337-2 100ul

Orders: [order@signalwayantibody.com](mailto:order@signalwayantibody.com)Support: [tech@signalwayantibody.com](mailto:tech@signalwayantibody.com)

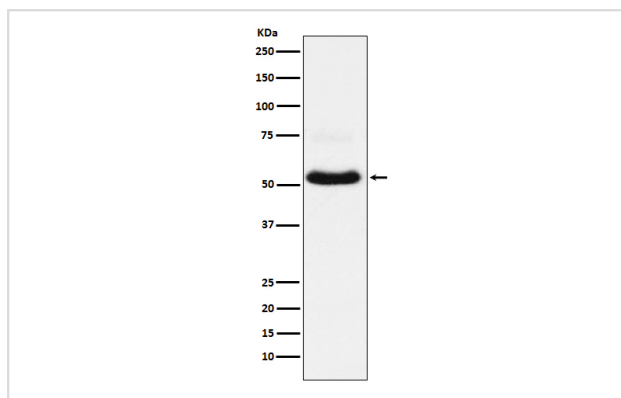
## Description

Product Name	VGLUT1 Rabbit mAb
Host Species	Rabbit
Clonality	Monoclonal
Isotype	Rabbit IgG
Purification	Affinity-chromatography
Applications	WB
Species Reactivity	Human Mouse Rat
Specificity	VGLuT1 Antibody detects endogenous levels of total VGLuT1
Immunogen Description	A synthesized peptide derived from human VGLuT1
Other Names	BNPI; Slc17a7; VGLuT1;
Accession No.	Uniprot:Q9P2U7
Calculated MW	61kDa
Formulation	Rabbit IgG in phosphate buffered saline , pH 7.4, 150mM NaCl, 0.02% sodium azide and 50% glycerol.
Storage	Store at +4°C short term. Store at -20°C long term. Avoid freeze / thaw cycle.

## Application Details

WB: 1:500~1:2000

## Images



Western blot analysis of VGLuT1 expression in Neuro-2a cell lysate.

## Product Description

Mediates the uptake of glutamate into synaptic vesicles at presynaptic nerve terminals of excitatory neural cells. May also mediate the transport of inorganic phosphate.

---

Note: This product is for in vitro research use only and is not intended for use in humans or animals.