

## Loricrin Rabbit mAb

Catalog No: #56338

Package Size: #56338-1 50ul #56338-2 100ul

Orders: [order@signalwayantibody.com](mailto:order@signalwayantibody.com)Support: [tech@signalwayantibody.com](mailto:tech@signalwayantibody.com)

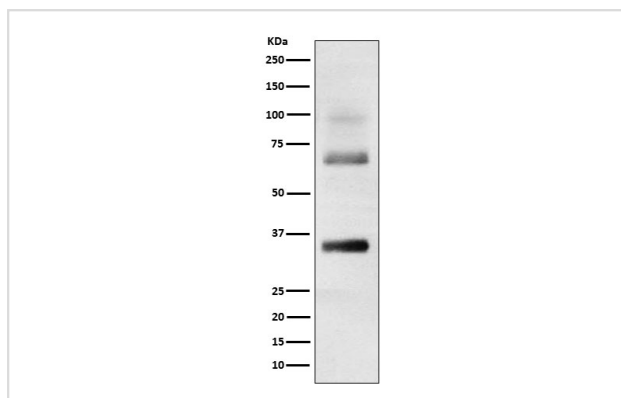
## Description

Product Name	Loricrin Rabbit mAb
Host Species	Rabbit
Clonality	Monoclonal
Isotype	Rabbit IgG
Purification	Affinity-chromatography
Applications	WB IHC
Species Reactivity	Human
Specificity	Loricrin Antibody detects endogenous levels of total Loricrin
Immunogen Description	A synthesized peptide derived from human Loricrin
Other Names	LOR; Loricrin; LRN;
Accession No.	Uniprot:P23490
Calculated MW	38kDa
Formulation	Rabbit IgG in phosphate buffered saline , pH 7.4, 150mM NaCl, 0.02% sodium azide and 50% glycerol.
Storage	Store at +4°C short term. Store at -20°C long term. Avoid freeze / thaw cycle.

## Application Details

WB:1:1000~1:5000IHC:1:50~1:200

## Images



Western blot analysis of Loricrin expression in Human skin cell lysate.

## Product Description

Major keratinocyte cell envelope protein.

---

Note: This product is for in vitro research use only and is not intended for use in humans or animals.