

NCX1 Rabbit mAb

Catalog No: #56340

Package Size: #56340-1 50ul #56340-2 100ul

Orders: order@signalwayantibody.comSupport: tech@signalwayantibody.com

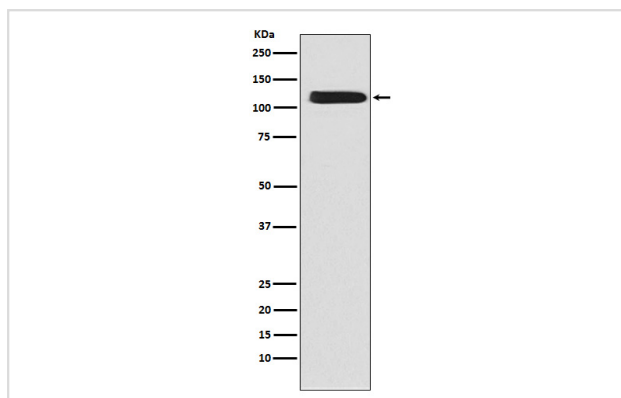
Description

Product Name	NCX1 Rabbit mAb
Host Species	Rabbit
Clonality	Monoclonal
Isotype	Rabbit IgG
Purification	Affinity-chromatography
Applications	WB
Species Reactivity	Human Mouse Rat
Specificity	NCX1 Antibody detects endogenous levels of total NCX1
Immunogen Description	A synthesized peptide derived from human NCX1
Other Names	Na ⁺ /Ca ²⁺ exchanger; NCX1; SLC8A1;
Accession No.	Uniprot:P32418
Calculated MW	108kDa
Formulation	Rabbit IgG in phosphate buffered saline , pH 7.4, 150mM NaCl, 0.02% sodium azide and 50% glycerol.
Storage	Store at +4°C short term. Store at -20°C long term. Avoid freeze / thaw cycle.

Application Details

WB: 1:500~1:2000

Images



Western blot analysis of NCX1 expression in K562 cell lysate.

Product Description

Rapidly transports Ca²⁺ during excitation-contraction coupling. Ca²⁺ is extruded from the cell during relaxation so as to prevent overloading of intracellular stores.

Note: This product is for in vitro research use only and is not intended for use in humans or animals.