

## CD48 Rabbit mAb

Catalog No: #56347

Package Size: #56347-1 50ul #56347-2 100ul

Orders: order@signalwayantibody.com

Support: tech@signalwayantibody.com

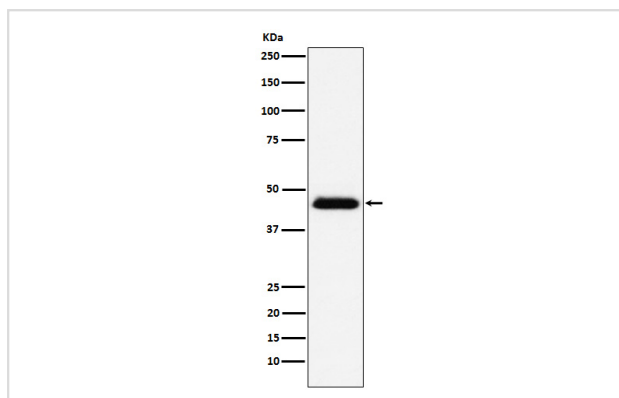
## Description

Product Name	CD48 Rabbit mAb
Host Species	Rabbit
Clonality	Monoclonal
Isotype	Rabbit IgG
Purification	Affinity-chromatography
Applications	WB IHC ICC/IF IP
Species Reactivity	Human
Specificity	CD48 Antibody detects endogenous levels of total CD48
Immunogen Description	A synthesized peptide derived from human CD48
Other Names	BCM1; BLAST; BLAST1; CD48; hCD48; mCD48; MEM102; SLAMF2;
Accession No.	Uniprot:P09326
Calculated MW	43kDa
Formulation	Rabbit IgG in phosphate buffered saline , pH 7.4, 150mM NaCl, 0.02% sodium azide and 50% glycerol.
Storage	Store at +4°C short term. Store at -20°C long term. Avoid freeze / thaw cycle.

## Application Details

WB:1:500~1:2000IHC:1:50~1:200ICC/IF:1:50~1:200IP:1:50

## Images



Western blot analysis of CD48 expression in Raji cell lysate.

## Product Description

Ligand for CD2. Might facilitate interaction between activated lymphocytes. Probably involved in regulating T-cell activation.

---

Note: This product is for in vitro research use only and is not intended for use in humans or animals.