

## Mammaglobin A Rabbit mAb

Catalog No: #56348

Package Size: #56348-1 50ul #56348-2 100ul

Orders: order@signalwayantibody.com

Support: tech@signalwayantibody.com

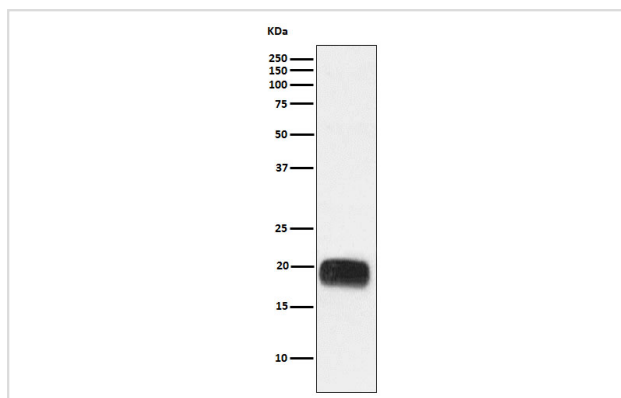
## Description

Product Name	Mammaglobin A Rabbit mAb
Host Species	Rabbit
Clonality	Monoclonal
Isotype	Rabbit IgG
Purification	Affinity-chromatography
Applications	WB IHC
Species Reactivity	Human Rat
Specificity	Mammaglobin A Antibody detects endogenous levels of total Mammaglobin A
Immunogen Description	A synthesized peptide derived from human Mammaglobin A
Other Names	Mammaglobin 1; Mammaglobin-A; MGB1; Scgb2a2; SG2A2; UGB2;
Accession No.	Uniprot:Q13296
Calculated MW	18kDa
Formulation	Rabbit IgG in phosphate buffered saline , pH 7.4, 150mM NaCl, 0.02% sodium azide and 50% glycerol.
Storage	Store at +4°C short term. Store at -20°C long term. Avoid freeze / thaw cycle.

## Application Details

WB:1:500~1:2000IHC:1:50~1:200

## Images



Western blot analysis of Mammaglobin A expression in Human breast cancer lysate.

## Product Description

Belongs to the secretoglobin family. Lipophilin subfamily.

---

Note: This product is for in vitro research use only and is not intended for use in humans or animals.