

Napsin A Rabbit mAb

Catalog No: #56353



Package Size: #56353-1 50ul #56353-2 100ul

Orders: order@signalwayantibody.com

Support: tech@signalwayantibody.com

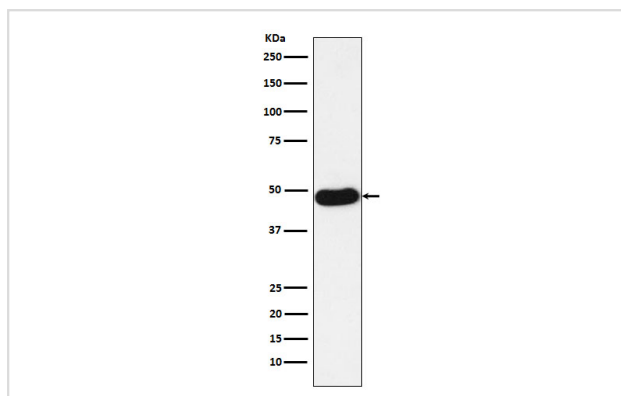
Description

Product Name	Napsin A Rabbit mAb
Host Species	Rabbit
Clonality	Monoclonal
Isotype	Rabbit IgG
Purification	Affinity-chromatography
Applications	WB IHC IP
Species Reactivity	Human
Specificity	NAPSIN A Antibody detects endogenous levels of total NAPSIN A
Immunogen Description	A synthesized peptide derived from human NAPSIN A
Other Names	ASP4; KAP; Kdap; NAP1; NAPA; Napsa; Napsin-1; Napsin-A; Pronapsin A; SNAPA; TA01/TA02;
Accession No.	Uniprot:O96009
Calculated MW	45kDa
Formulation	Rabbit IgG in phosphate buffered saline , pH 7.4, 150mM NaCl, 0.02% sodium azide and 50% glycerol.
Storage	Store at +4°C short term. Store at -20°C long term. Avoid freeze / thaw cycle.

Application Details

WB:1:1000~1:5000IHC:1:50~1:200IP:1:50

Images



Western blot analysis of NAPSIN A expression in Human lung adenocarcinoma lysate.

Product Description

May be involved in processing of pneumocyte surfactant precursors.

Note: This product is for in vitro research use only and is not intended for use in humans or animals.