

## K Cadherin Rabbit mAb

Catalog No: #56356

Package Size: #56356-1 50ul #56356-2 100ul

Orders: [order@signalwayantibody.com](mailto:order@signalwayantibody.com)Support: [tech@signalwayantibody.com](mailto:tech@signalwayantibody.com)

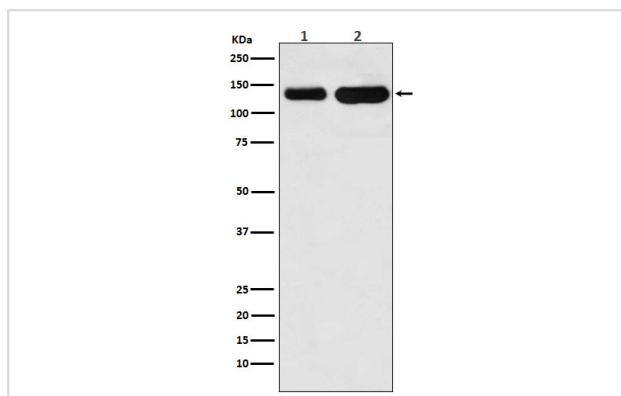
## Description

Product Name	K Cadherin Rabbit mAb
Host Species	Rabbit
Clonality	Monoclonal
Isotype	Rabbit IgG
Purification	Affinity-chromatography
Applications	WB IP
Species Reactivity	Human Mouse Rat
Specificity	K Cadherin Antibody detects endogenous levels of total K Cadherin
Immunogen Description	A synthesized peptide derived from human K Cadherin
Other Names	CAD6; Cdh6; K-cadherin; KCAD; Kidney cadherin;
Accession No.	Uniprot:P55285
Calculated MW	130kDa
Formulation	Rabbit IgG in phosphate buffered saline , pH 7.4, 150mM NaCl, 0.02% sodium azide and 50% glycerol.
Storage	Store at +4°C short term. Store at -20°C long term. Avoid freeze / thaw cycle.

## Application Details

WB:1:500~1:2000IP:1:50

## Images



Western blot analysis of K Cadherin expression in (1) Jurkat cell lysate; (2) Mouse heart lysate.

## Product Description

Cadherins are calcium dependent cell adhesion proteins. They preferentially interact with themselves in a homophilic manner in connecting cells; cadherins may thus contribute to the sorting of heterogeneous cell types.

---

Note: This product is for in vitro research use only and is not intended for use in humans or animals.