

TSH beta Rabbit mAb

Catalog No: #56357

Package Size: #56357-1 50ul #56357-2 100ul

Orders: order@signalwayantibody.com

Support: tech@signalwayantibody.com

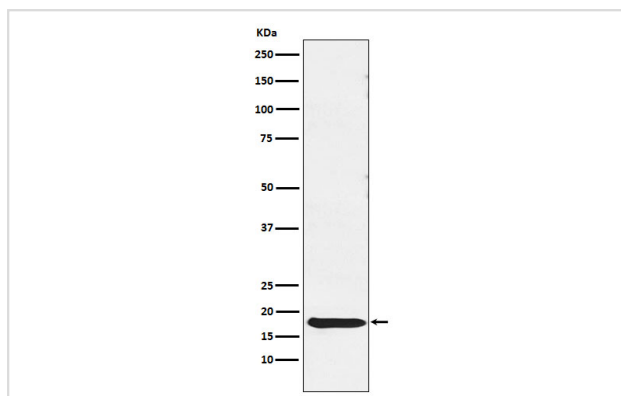
Description

Product Name	TSH beta Rabbit mAb
Host Species	Rabbit
Clonality	Monoclonal
Isotype	Rabbit IgG
Purification	Affinity-chromatography
Applications	WB IHC
Species Reactivity	Human
Specificity	TSH beta Antibody detects endogenous levels of total TSH beta
Immunogen Description	A synthesized peptide derived from human TSH beta
Other Names	CHNG4; TSHB;
Accession No.	Uniprot:P01222
Calculated MW	16kDa
Formulation	Rabbit IgG in phosphate buffered saline , pH 7.4, 150mM NaCl, 0.02% sodium azide and 50% glycerol.
Storage	Store at +4°C short term. Store at -20°C long term. Avoid freeze / thaw cycle.

Application Details

WB:1:500~1:2000IHC:1:50~1:200

Images



Western blot analysis of TSH beta expression in Human pituitary lysate.

Product Description

Various hormones are secreted from the anterior pituitary during development and growth. Thyroid Stimulating Hormone (TSH) is secreted from the anterior pituitary and controls thyroid structure and metabolism

Note: This product is for in vitro research use only and is not intended for use in humans or animals.