

## TLE1 Rabbit mAb

Catalog No: #56359

Package Size: #56359-1 50ul #56359-2 100ul

Orders: [order@signalwayantibody.com](mailto:order@signalwayantibody.com)Support: [tech@signalwayantibody.com](mailto:tech@signalwayantibody.com)

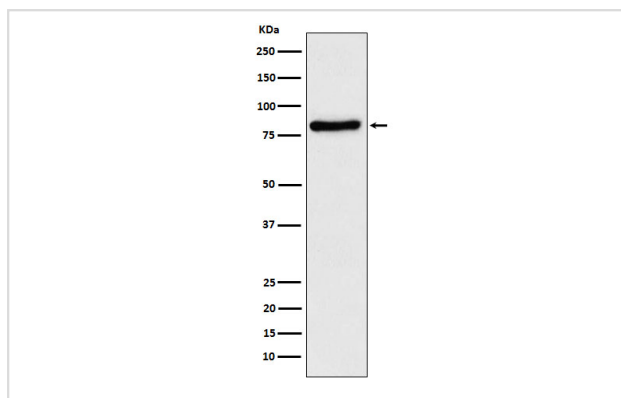
## Description

Product Name	TLE1 Rabbit mAb
Host Species	Rabbit
Clonality	Monoclonal
Isotype	Rabbit IgG
Purification	Affinity-chromatography
Applications	WB IHC ICC/IF
Species Reactivity	Human Mouse Rat
Specificity	TLE 1 Antibody detects endogenous levels of total TLE 1
Immunogen Description	A synthesized peptide derived from human TLE 1
Other Names	ESG; ESG1; GRG1; TLE1;
Accession No.	Uniprot:Q04724
Calculated MW	83kDa
Formulation	Rabbit IgG in phosphate buffered saline , pH 7.4, 150mM NaCl, 0.02% sodium azide and 50% glycerol.
Storage	Store at +4°C short term. Store at -20°C long term. Avoid freeze / thaw cycle.

## Application Details

WB:1:500~1:2000IHC:1:50~1:200ICC/IF:1:50~1:200

## Images



Western blot analysis of TLE 1 expression in SH-SY5Y cell lysate.

## Product Description

Transcriptional corepressor that binds to a number of transcription factors. Inhibits NF-kappa-B-regulated gene expression. Inhibits the transcriptional activation mediated by FOXA2, and by CTNNB1 and TCF family members in Wnt signaling.

---

Note: This product is for in vitro research use only and is not intended for use in humans or animals.