

# ATOH1 Rabbit mAb

Catalog No: #56366



Package Size: #56366-1 50ul #56366-2 100ul

Orders: [order@signalwayantibody.com](mailto:order@signalwayantibody.com)Support: [tech@signalwayantibody.com](mailto:tech@signalwayantibody.com)

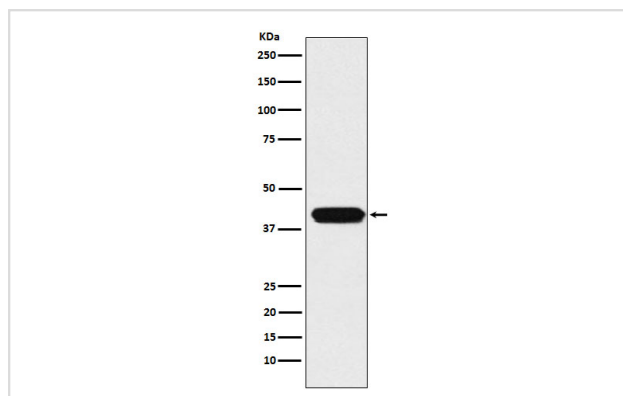
## Description

Product Name	ATOH1 Rabbit mAb
Host Species	Rabbit
Clonality	Monoclonal
Isotype	Rabbit IgG
Purification	Affinity-chromatography
Applications	WB
Species Reactivity	Human Mouse Rat
Specificity	MATH1/HATH1 Antibody detects endogenous levels of total MATH1/HATH1
Immunogen Description	A synthesized peptide derived from human MATH1/HATH1
Other Names	ATH1; ATOH1; bHLHa14; hATH1; MATH1;
Accession No.	Uniprot:Q92858
Calculated MW	38kDa
Formulation	Rabbit IgG in phosphate buffered saline , pH 7.4, 150mM NaCl, 0.02% sodium azide and 50% glycerol.
Storage	Store at +4°C short term. Store at -20°C long term. Avoid freeze / thaw cycle.

## Application Details

WB:1:500~1:1000

## Images



Western blot analysis of MATH1/HATH1 expression in HepG2 cell lysate.

## Product Description

Activates E box-dependent transcription in collaboration with TCF3/E47, but the activity is completely antagonized by the negative regulator of neurogenesis HES1. May play a role in the differentiation of subsets of neural cells by activating E box-dependent transcription.

---

Note: This product is for in vitro research use only and is not intended for use in humans or animals.