

## TRF2 Rabbit mAb

Catalog No: #56367

Package Size: #56367-1 50ul #56367-2 100ul

Orders: order@signalwayantibody.com

Support: tech@signalwayantibody.com

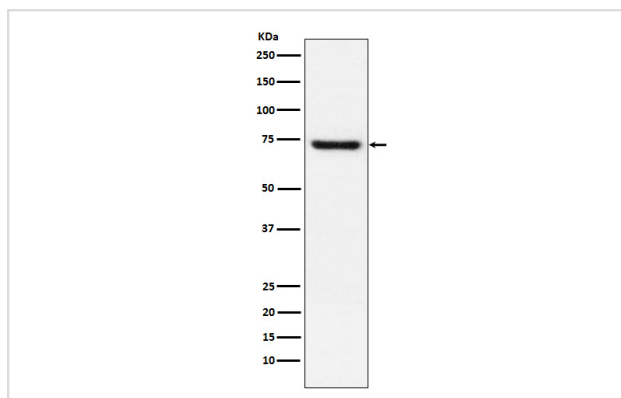
## Description

Product Name	TRF2 Rabbit mAb
Host Species	Rabbit
Clonality	Monoclonal
Isotype	Rabbit IgG
Purification	Affinity-chromatography
Applications	WB IHC ICC/IF
Species Reactivity	Human
Specificity	TRF2 Antibody detects endogenous levels of total TRF2
Immunogen Description	A synthesized peptide derived from human TRF2
Other Names	Terf2; TRBF2; TRF2;
Accession No.	Uniprot:Q15554
Calculated MW	66kDa
Formulation	Rabbit IgG in phosphate buffered saline , pH 7.4, 150mM NaCl, 0.02% sodium azide and 50% glycerol.
Storage	Store at +4°C short term. Store at -20°C long term. Avoid freeze / thaw cycle.

## Application Details

WB:1:500~1:2000IHC:1:50~1:200ICC/IF:1:50~1:200

## Images



Western blot analysis of TRF2 expression in Jurkat cell lysate.

## Product Description

Binds the telomeric double-stranded 5'-TTAGGG-3' repeat and plays a central role in telomere maintenance and protection against end-to-end fusion of chromosomes. In addition to its telomeric DNA-binding role, required to recruit a number of factors and enzymes required for telomere protection, including the shelterin complex, TERF2IP/RAP1 and DCLRE1B/Apollo.

---

Note: This product is for in vitro research use only and is not intended for use in humans or animals.