

Bub1 Rabbit mAb

Catalog No: #56369

Package Size: #56369-1 50ul #56369-2 100ul

Orders: order@signalwayantibody.comSupport: tech@signalwayantibody.com

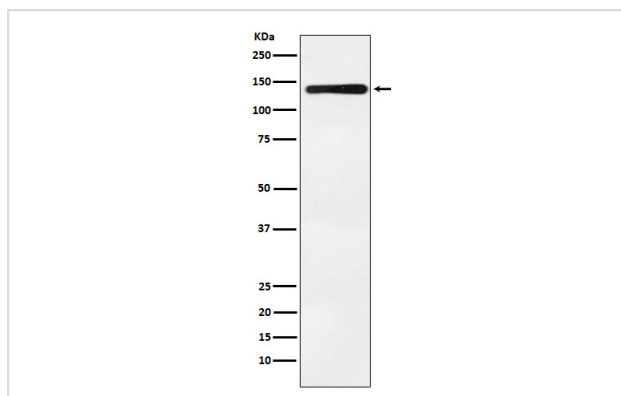
Description

| | |
|-----------------------|--|
| Product Name | Bub1 Rabbit mAb |
| Host Species | Rabbit |
| Clonality | Monoclonal |
| Isotype | Rabbit IgG |
| Purification | Affinity-chromatography |
| Applications | WB IHC |
| Species Reactivity | Human Mouse Rat |
| Specificity | Bub1 Antibody detects endogenous levels of total Bub1 |
| Immunogen Description | A synthesized peptide derived from human Bub1 |
| Other Names | Bub1; BUB1A; BUB1L; hBUB1; |
| Accession No. | Uniprot:O43683 |
| Calculated MW | 122kDa |
| Formulation | Rabbit IgG in phosphate buffered saline , pH 7.4, 150mM NaCl, 0.02% sodium azide and 50% glycerol. |
| Storage | Store at +4°C short term. Store at -20°C long term. Avoid freeze / thaw cycle. |

Application Details

WB:1:500~1:1000IHC:1:50~1:200

Images



Western blot analysis of Bub1 expression in K562 cell lysate.

Product Description

Serine/threonine-protein kinase that performs 2 crucial functions during mitosis: it is essential for spindle-assembly checkpoint signaling and for correct chromosome alignment. Has a key role in the assembly of checkpoint proteins at the kinetochore, being required for the subsequent localization of CENPF, BUB1B, CENPE and MAD2L1.

Note: This product is for in vitro research use only and is not intended for use in humans or animals.