

NPRC Rabbit mAb

Catalog No: #56370

Package Size: #56370-1 50ul #56370-2 100ul

Orders: order@signalwayantibody.comSupport: tech@signalwayantibody.com

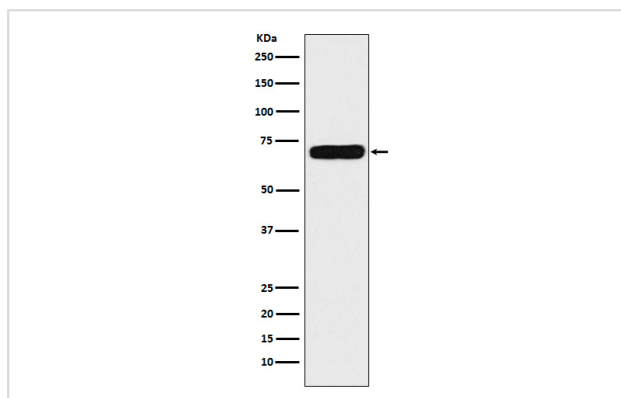
Description

Product Name	NPRC Rabbit mAb
Host Species	Rabbit
Clonality	Monoclonal
Isotype	Rabbit IgG
Purification	Affinity-chromatography
Applications	WB FC
Species Reactivity	Human Mouse Rat
Specificity	Natriuretic Peptide Receptor C Antibody detects endogenous levels of total Natriuretic Peptide Receptor C
Immunogen Description	A synthesized peptide derived from human Natriuretic Peptide Receptor C
Other Names	ANPC; ANPRC; GUCY2B; NPR 3; NPR C; Npr3; NPRC;
Accession No.	Uniprot:P17342
Calculated MW	70kDa
Formulation	Rabbit IgG in phosphate buffered saline , pH 7.4, 150mM NaCl, 0.02% sodium azide and 50% glycerol.
Storage	Store at +4°C short term. Store at -20°C long term. Avoid freeze / thaw cycle.

Application Details

WB:1:500~1:2000FC:1:100

Images



Western blot analysis of Natriuretic Peptide Receptor C expression in HeLa cell lysate.

Product Description

Receptor for the natriuretic peptide hormones, binding with similar affinities atrial natriuretic peptide NPPA/ANP, brain natriuretic peptide NPPB/BNP, and C-type natriuretic peptide NPPC/CNP.

Note: This product is for in vitro research use only and is not intended for use in humans or animals.