

## CRALBP Rabbit mAb

Catalog No: #56371



Package Size: #56371-1 50ul #56371-2 100ul

Orders: [order@signalwayantibody.com](mailto:order@signalwayantibody.com)Support: [tech@signalwayantibody.com](mailto:tech@signalwayantibody.com)

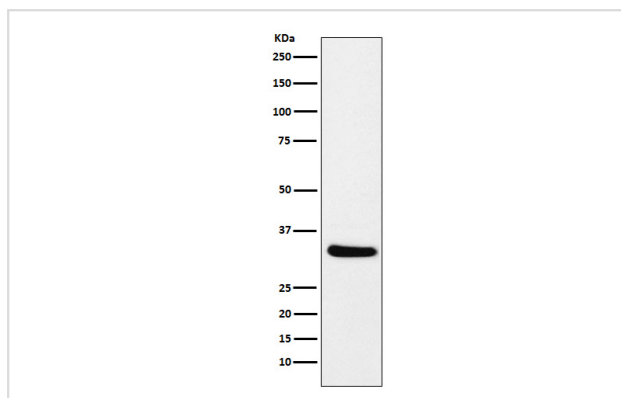
## Description

Product Name	CRALBP Rabbit mAb
Host Species	Rabbit
Clonality	Monoclonal
Isotype	Rabbit IgG
Purification	Affinity-chromatography
Applications	WB IP
Species Reactivity	Mouse Rat
Specificity	CRALBP Antibody detects endogenous levels of total CRALBP
Immunogen Description	A synthesized peptide derived from human CRALBP
Other Names	RLBP1;
Accession No.	Uniprot:P12271
Calculated MW	36kDa
Formulation	Rabbit IgG in phosphate buffered saline , pH 7.4, 150mM NaCl, 0.02% sodium azide and 50% glycerol.
Storage	Store at +4°C short term. Store at -20°C long term. Avoid freeze / thaw cycle.

## Application Details

WB:1:500~1:2000IP:1:50

## Images



Western blot analysis of CRALBP expression in mouse eyeball lysate.

## Product Description

Participates in the regeneration of active 11-cis-retinol and 11-cis-retinaldehyde, from the inactive 11-trans products of the rhodopsin photocycle and in the de novo synthesis of these retinoids from 11-trans metabolic precursors.

---

Note: This product is for in vitro research use only and is not intended for use in humans or animals.