

PAR6 Rabbit mAb

Catalog No: #56373

Package Size: #56373-1 50ul #56373-2 100ul

Orders: order@signalwayantibody.comSupport: tech@signalwayantibody.com

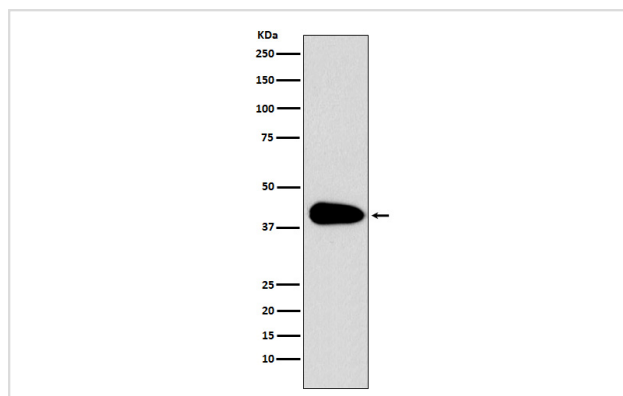
Description

| | |
|-----------------------|--|
| Product Name | PAR6 Rabbit mAb |
| Host Species | Rabbit |
| Clonality | Monoclonal |
| Isotype | Rabbit IgG |
| Purification | Affinity-chromatography |
| Applications | WB IP |
| Species Reactivity | Human Mouse Rat |
| Specificity | PAR6 Antibody detects endogenous levels of total PAR6 |
| Immunogen Description | A synthesized peptide derived from human PAR6 |
| Other Names | PAR6; PAR6C; TAX40; PAR-6A; TIP-40; PAR6alpha; |
| Accession No. | Uniprot:Q9NPB6 |
| Calculated MW | 37kDa |
| Formulation | Rabbit IgG in phosphate buffered saline , pH 7.4, 150mM NaCl, 0.02% sodium azide and 50% glycerol. |
| Storage | Store at +4°C short term. Store at -20°C long term. Avoid freeze / thaw cycle. |

Application Details

WB:1:500~1:2000IP:1:50

Images



Western blot analysis of PAR6 expression in Jurkat cell lysate.

Product Description

Adapter protein involved in asymmetrical cell division and cell polarization processes. Probably involved in the formation of epithelial tight junctions. Association with PARD3 may prevent the interaction of PARD3 with F11R/JAM1, thereby preventing tight junction assembly.

Note: This product is for in vitro research use only and is not intended for use in humans or animals.