

## Thioredoxin 2 Rabbit mAb

Catalog No: #56376



Package Size: #56376-1 50ul #56376-2 100ul

Orders: [order@signalwayantibody.com](mailto:order@signalwayantibody.com)Support: [tech@signalwayantibody.com](mailto:tech@signalwayantibody.com)

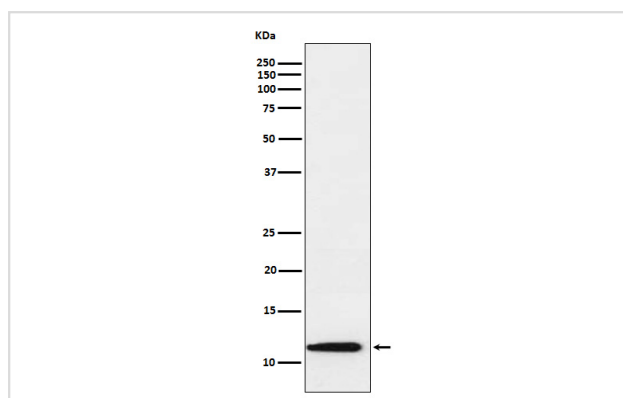
## Description

Product Name	Thioredoxin 2 Rabbit mAb
Host Species	Rabbit
Clonality	Monoclonal
Isotype	Rabbit IgG
Purification	Affinity-chromatography
Applications	WB IHC ICC/IF FC
Species Reactivity	Human Mouse Rat
Specificity	Thioredoxin 2 Antibody detects endogenous levels of total Thioredoxin 2
Immunogen Description	A synthesized peptide derived from human Thioredoxin 2
Other Names	MT-TRX; MTRX; Thioredoxin2; TRX2; TXN2;
Accession No.	Uniprot:Q99757
Calculated MW	12kDa
Formulation	Rabbit IgG in phosphate buffered saline , pH 7.4, 150mM NaCl, 0.02% sodium azide and 50% glycerol.
Storage	Store at +4°C short term. Store at -20°C long term. Avoid freeze / thaw cycle.

## Application Details

WB:1:1000~1:5000IHC:1:50~1:200ICC/IF:1:50~1:200FC:1:100

## Images



Western blot analysis of Thioredoxin 2 expression in Raji cell lysate.

## Product Description

Thioredoxins (Trx) are small, multi-functional proteins with oxidoreductase activity and are ubiquitous in essentially all living cells. Trx contains a redox-active disulfide/dithiol group within the conserved Cys-Gly-Pro-Cys active site.

---

Note: This product is for in vitro research use only and is not intended for use in humans or animals.