

## HIP1 Rabbit mAb

Catalog No: #56380

Package Size: #56380-1 50ul #56380-2 100ul

Orders: [order@signalwayantibody.com](mailto:order@signalwayantibody.com)Support: [tech@signalwayantibody.com](mailto:tech@signalwayantibody.com)

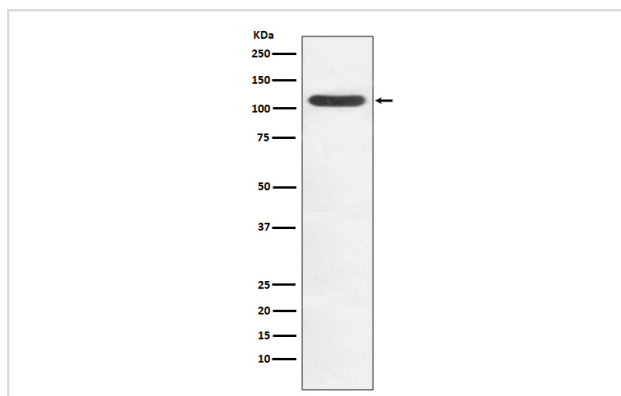
## Description

Product Name	HIP1 Rabbit mAb
Host Species	Rabbit
Clonality	Monoclonal
Isotype	Rabbit IgG
Purification	Affinity-chromatography
Applications	WB ICC/IF IP
Species Reactivity	Human Mouse Rat
Specificity	HIP1 Antibody detects endogenous levels of total HIP1
Immunogen Description	A synthesized peptide derived from human HIP1
Other Names	HIP 1; hip1; HIP1/PDGFRB fusion gene; HIP1 ; Huntingtin interacting protein 1;
Accession No.	Uniprot:O00291
Calculated MW	116kDa
Formulation	Rabbit IgG in phosphate buffered saline , pH 7.4, 150mM NaCl, 0.02% sodium azide and 50% glycerol.
Storage	Store at +4°C short term. Store at -20°C long term. Avoid freeze / thaw cycle.

## Application Details

WB:1:500~1:2000 ICC/IF:1:50~1:200 IP:1:30

## Images



Western blot analysis of HIP1 in Jurkat cell lysate.

## Product Description

Plays a role in clathrin-mediated endocytosis and trafficking. Involved in regulating AMPA receptor trafficking in the central nervous system in an NMDA-dependent manner. Enhances androgen receptor (AR)-mediated transcription.

---

Note: This product is for in vitro research use only and is not intended for use in humans or animals.