

## LI Cadherin Rabbit mAb

Catalog No: #56385



Package Size: #56385-1 50ul #56385-2 100ul

Orders: order@signalwayantibody.com

Support: tech@signalwayantibody.com

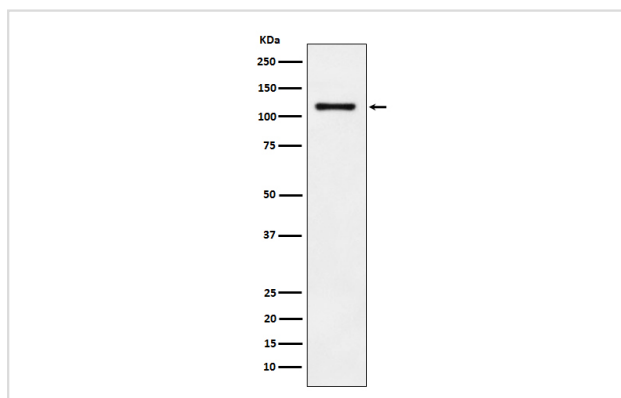
## Description

Product Name	LI Cadherin Rabbit mAb
Host Species	Rabbit
Clonality	Monoclonal
Isotype	Rabbit IgG
Purification	Affinity-chromatography
Applications	WB IHC IP
Species Reactivity	Human
Specificity	LI-Cadherin Antibody detects endogenous levels of total LI-Cadherin
Immunogen Description	A synthesized peptide derived from human LI-Cadherin
Other Names	Cadherin 16; Cadherin 17; CDH16; Cdh17; Formerly CDH16; HPT 1; LI-cadherin; Liver Cadherin; liver intestine cadherin;
Accession No.	Uniprot:Q12864
Calculated MW	120kDa
Formulation	Rabbit IgG in phosphate buffered saline , pH 7.4, 150mM NaCl, 0.02% sodium azide and 50% glycerol.
Storage	Store at +4°C short term. Store at -20°C long term. Avoid freeze / thaw cycle.

## Application Details

WB:1:500~1:2000IHC:1:50~1:200IP:1:50

## Images



Western blot analysis of LI-Cadherin expression in HT-29 cell lysate.

## Product Description

Cadherins are calcium dependent cell adhesion proteins. They preferentially interact with themselves in a homophilic manner in connecting cells; cadherins may thus contribute to the sorting of heterogeneous cell types. LI-cadherin may have a role in the morphological organization of liver and intestine. Involved in intestinal peptide transport.

---

Note: This product is for in vitro research use only and is not intended for use in humans or animals.