

## HLA-Drb1 Rabbit mAb

Catalog No: #56390



Package Size: #56390-1 50ul #56390-2 100ul

Orders: [order@signalwayantibody.com](mailto:order@signalwayantibody.com)Support: [tech@signalwayantibody.com](mailto:tech@signalwayantibody.com)

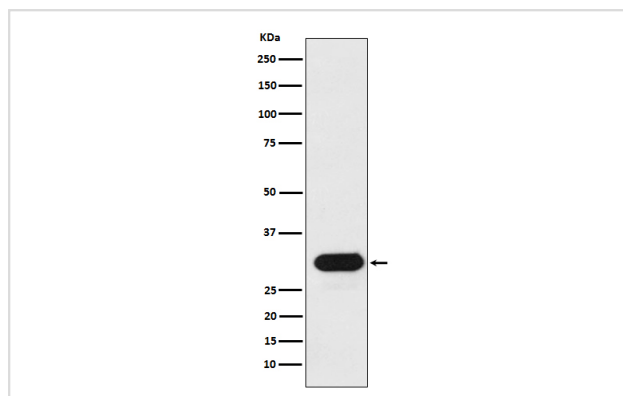
## Description

Product Name	HLA-Drb1 Rabbit mAb
Host Species	Rabbit
Clonality	Monoclonal
Isotype	Rabbit IgG
Purification	Affinity-chromatography
Applications	WB IHC ICC/IF
Species Reactivity	Human
Specificity	HLA-Drb1 Antibody detects endogenous levels of total HLA-Drb1
Immunogen Description	A synthesized peptide derived from human HLA-Drb1
Other Names	HLA-Drb1; DW2.2/DR2.2;
Accession No.	Uniprot:P01911
Calculated MW	29kDa
Formulation	Rabbit IgG in phosphate buffered saline , pH 7.4, 150mM NaCl, 0.02% sodium azide and 50% glycerol.
Storage	Store at +4°C short term. Store at -20°C long term. Avoid freeze / thaw cycle.

## Application Details

WB:1:500~1:2000IHC:1:50~1:200ICC/IF:1:50~1:200

## Images



Western blot analysis of HLA-Drb1 expression in Ramos cell lysate.

## Product Description

Binds peptides derived from antigens that access the endocytic route of antigen presenting cells (APC) and presents them on the cell surface for recognition by the CD4 T-cells.

---

Note: This product is for in vitro research use only and is not intended for use in humans or animals.