

Pancreatic Lipase $\alpha\Omega\frac{1}{2}\alpha\Omega\frac{1}{2}$ PNLIP $\alpha\Omega\frac{1}{2}\alpha\Omega\frac{1}{2}$ Rabbit mAb

Catalog No: #56391

Package Size: #56391-1 50ul #56391-2 100ul

Orders: order@signalwayantibody.comSupport: tech@signalwayantibody.com

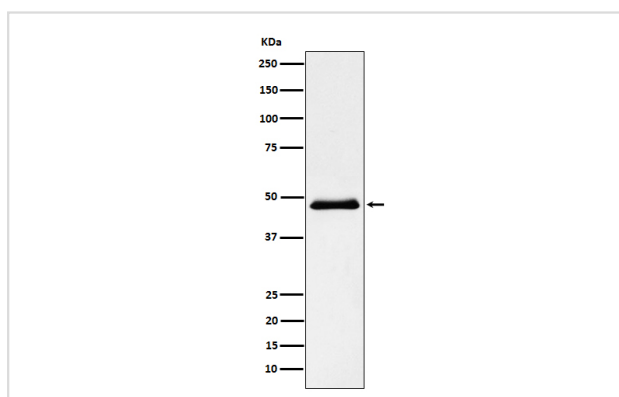
Description

Product Name	Pancreatic Lipase $\alpha\Omega\frac{1}{2}\alpha\Omega\frac{1}{2}$ PNLIP $\alpha\Omega\frac{1}{2}\alpha\Omega\frac{1}{2}$ Rabbit mAb
Host Species	Rabbit
Clonality	Monoclonal
Isotype	Rabbit IgG
Purification	Affinity-chromatography
Applications	WB IHC
Species Reactivity	Human
Specificity	Pancreatic Lipase $\alpha\Omega\frac{1}{2}\alpha\Omega\frac{1}{2}$ PNLIP $\alpha\Omega\frac{1}{2}\alpha\Omega\frac{1}{2}$ Antibody detects endogenous levels of total Pancreatic Lipase $\alpha\Omega\frac{1}{2}\alpha\Omega\frac{1}{2}$ PNLIP $\alpha\Omega\frac{1}{2}\alpha\Omega\frac{1}{2}$
Immunogen Description	A synthesized peptide derived from human Pancreatic Lipase $\alpha\Omega\frac{1}{2}\alpha\Omega\frac{1}{2}$ PNLIP $\alpha\Omega\frac{1}{2}\alpha\Omega\frac{1}{2}$
Other Names	Pancreatic lipase; PL; PNLIP; PNLIPD; PTL;
Accession No.	Uniprot:P16233
Calculated MW	49kDa
Formulation	Rabbit IgG in phosphate buffered saline , pH 7.4, 150mM NaCl, 0.02% sodium azide and 50% glycerol.
Storage	Store at +4°C short term. Store at -20°C long term. Avoid freeze / thaw cycle.

Application Details

WB:1:1000~1:5000IHC:1:50~1:200

Images



Western blot analysis of Pancreatic Lipase (PNLIP) expression in Human pancreas lysate.

Product Description

Belongs to the AB hydrolase superfamily. Lipase family. Contains 1 PLAT domain.

Note: This product is for in vitro research use only and is not intended for use in humans or animals.